

SITE ANALYSIS	01
CONTEXT	02
PROPOSAL	03
AXANOMETRIC VIEW	04
COURTYARD DESIGN	05
PATIO DESIGN	07
PARKING LOT DESIGN	09

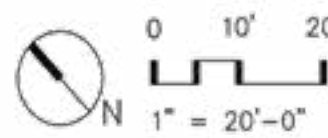
Site Analysis

OHA Poject \ Building: Residential \



- Wind Direction
- Sun Path
- Foot Circulation
- Trash Enclosure: Abandoned

- Main Courtyard - Open & Lack of Vegetation
- Patio - Dark & Secluded
- Parking Lot - Lacks Privacy
- Side Yard - Sunny & Direct Path



COURTYARD



Large open space. Opportunity for more vegetation and amenities for the residents.



Small, dark shady space. Additional seats and lightning would benefit the shady garden.

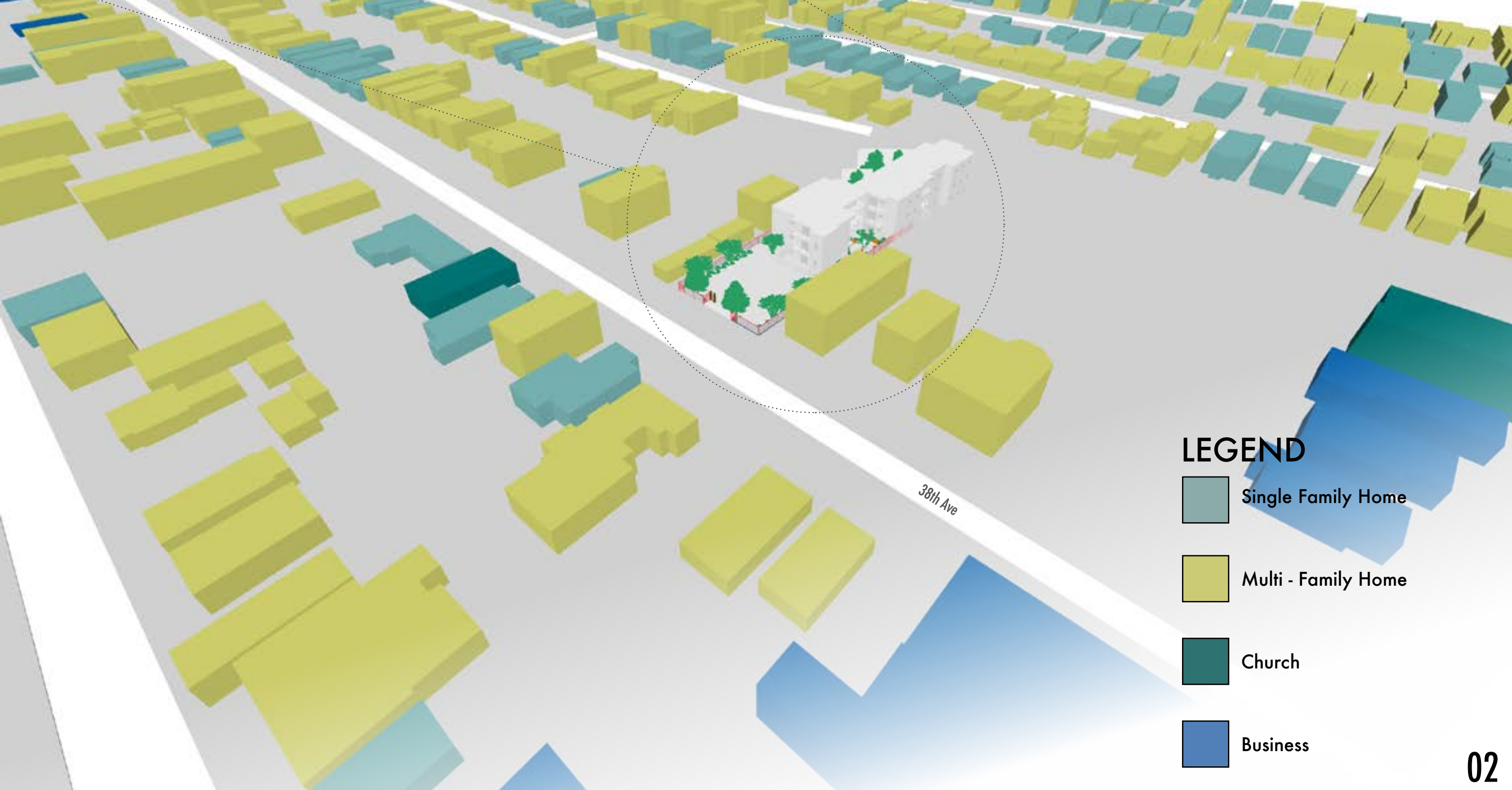
PARKING



Decrease public dumping by moving trash cans. Adding trees and vegetation would brighten the space.

CONTEXT

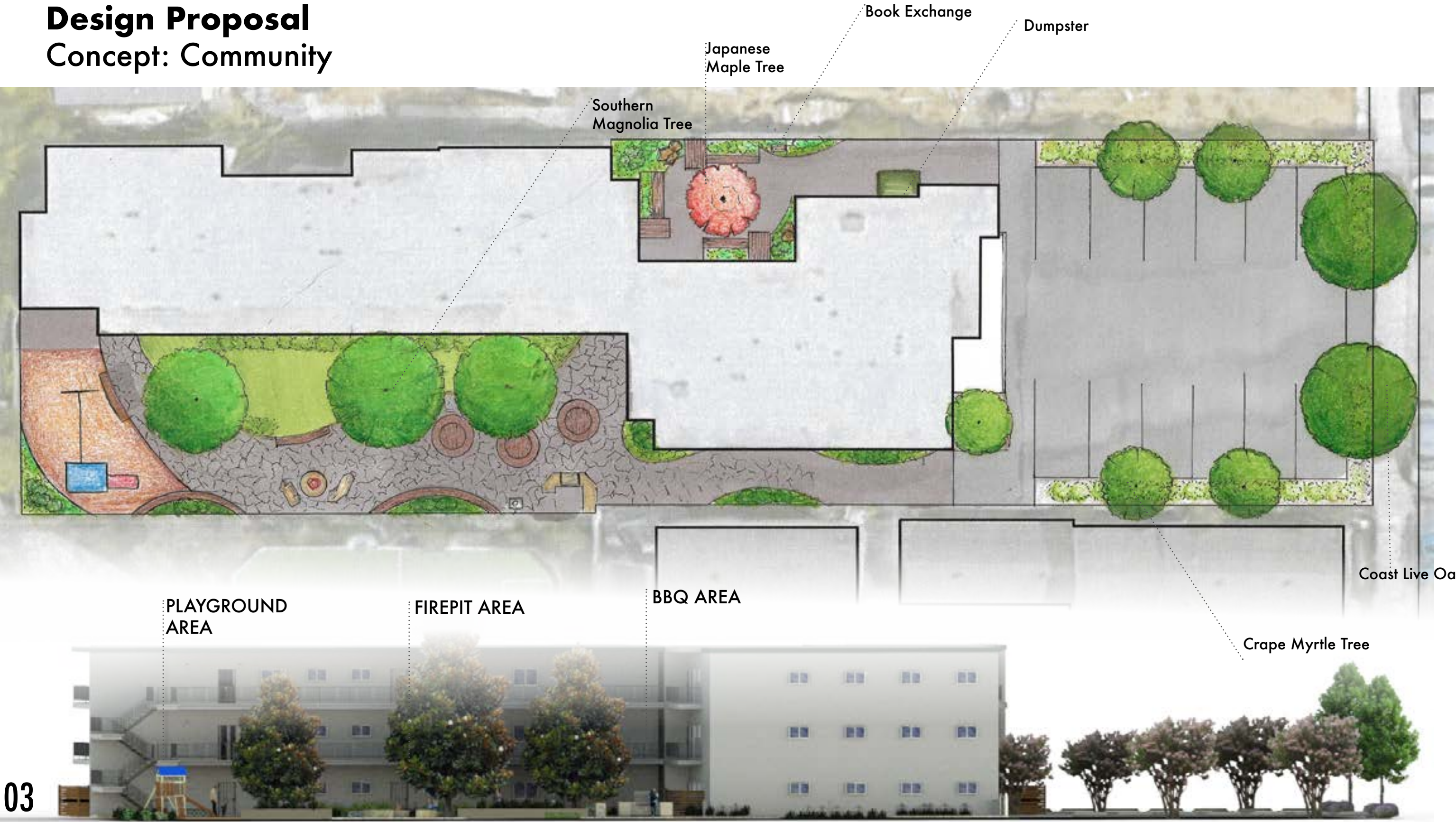
1853 38th Ave \ Oakland \ CA \ 94601



LEGEND

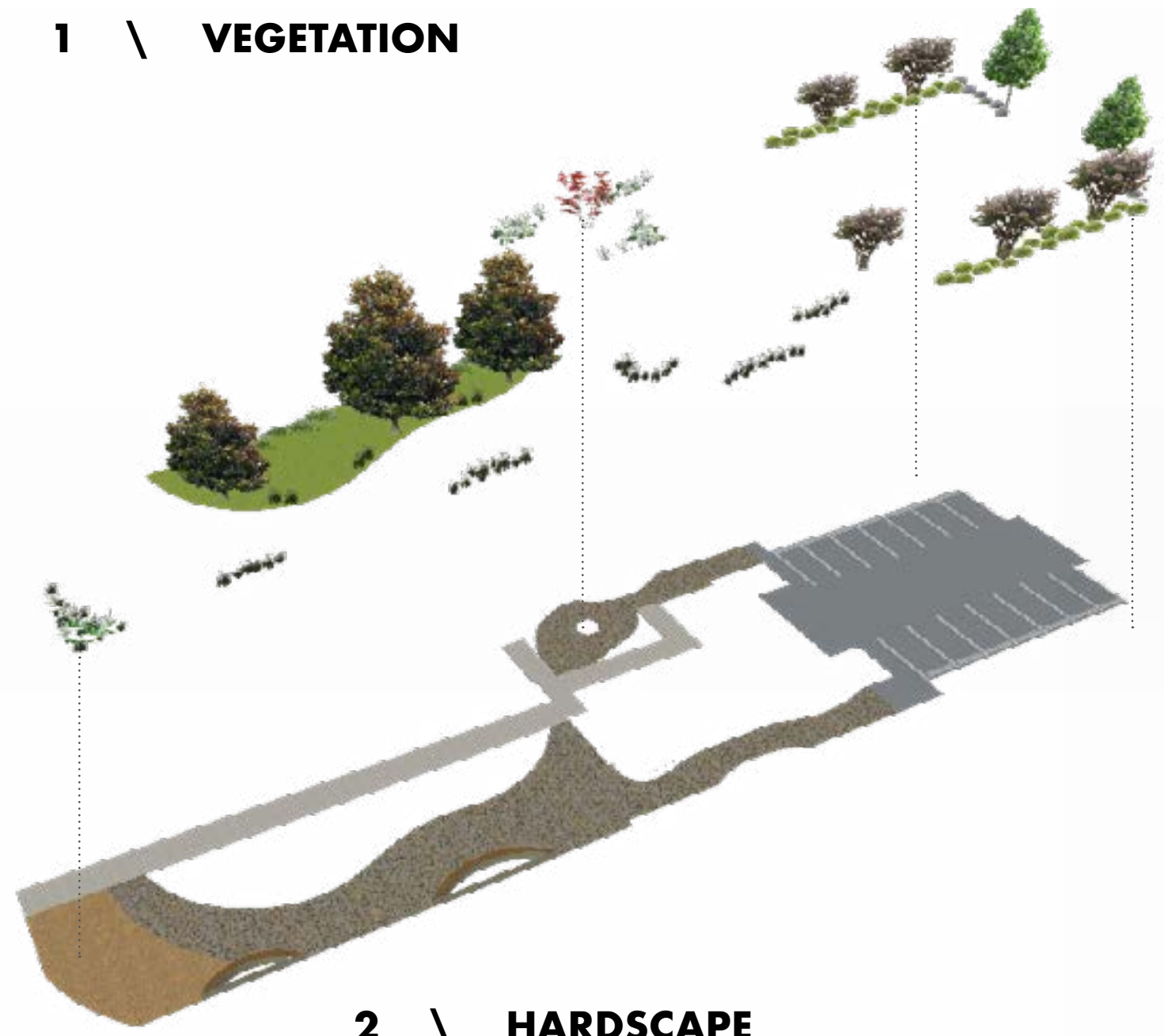
- Single Family Home
- Multi - Family Home
- Church
- Business

Design Proposal Concept: Community



03

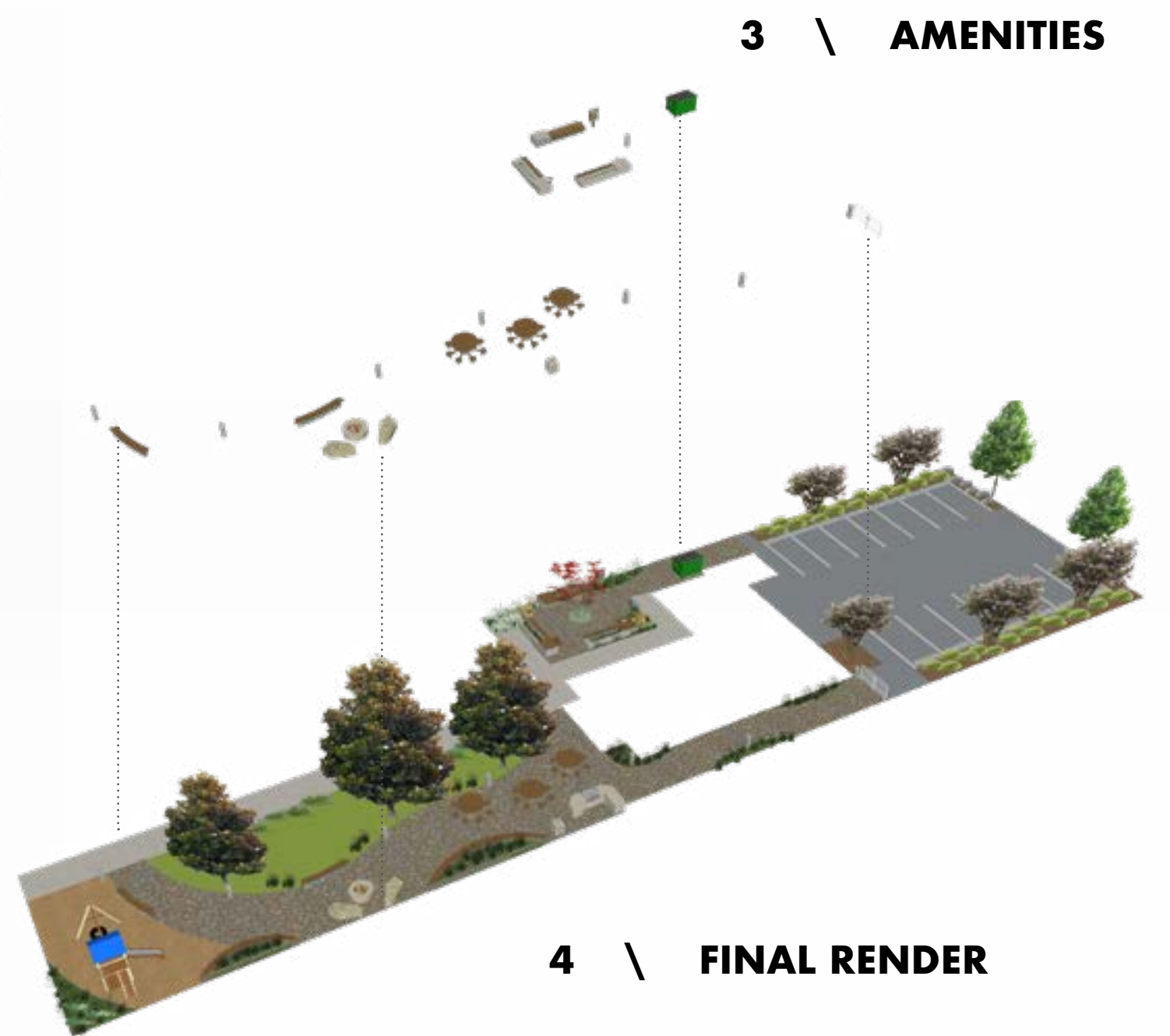
1 \ VEGETATION



2 \ HARDSCAPE



3 \ AMENITIES



4 \ FINAL RENDER



04

MAIN COURTYARD

Public / Socialization / Gathering /



VEGETATION



PLANT LIST



Bush Germander
Teucrium fruticans
'Azureum'



Hybrid Catmint
Nepeta × faassenii



California fuchsia
Epilobium canum



Hosta
Epilobium canum



Mondo Grass
Ophiopogon japonicus



Sword Fern
Polystichum munitum



Southern Magnolia
Magnolia grandiflora

Private / Tranquil / Peaceful

The patio is a dark enclosed spaced. I wanted to enhance by adding more vegetation to make a calming enclosed outdoor reading room. The public little library will promote reading and relaxation. Residents will be able to get away from the main gathering area somewhere cool, relaxed, and fresh.



- \ VEGETATION
- \ Moderate Water Use
- \ Shady Plants



Japanese Maple
Acer palmatum



Mondo Grass
Ophiopogon japonicus



Sword Fern
Polystichum munitum



Hosta
Epilobium canum



PARKING LOT

Safe \ Enclosed \ Low Maintenance \



Front Gate

The residents have 14 allocated spots for parking. One of the biggest issues the current residents face is public dumping. To decrease the chances of public dumping, I have proposed to build a large rolling car gate. This way the residents are able to prevent public dumping as well as keeping the space safe and private.



VEGETATION



Crape Myrtle
Lagerstroemia



Deer Grass
Muhlenbergia rigens



Lavender Hybrid
Lavandula x intermedia



Coast Live Oak
Quercus agrifolia