

Abraham Fong

# OHA Portfolio- 6309 Baker Street

Building Community- 2019





**Building Community.**

# Table of Contents

Site Context	1
Site Analysis	3
Planting Plan	5
Hand Rendered	6
Sample Photos	7
Hardscape Summary	8
Site Ammenties Summary	9
Shaderlight Renderings	(10-14)
Front View (63rd Street)	10
Side View (Baker Street)	11
Full Site Cross-Section ( Main Courtyard View)	12
Main Courtyard Renderings	13
Inner Court Yard Rendering	14



# Site Context- 6309 Baker Street Oakland, CA

## Summary

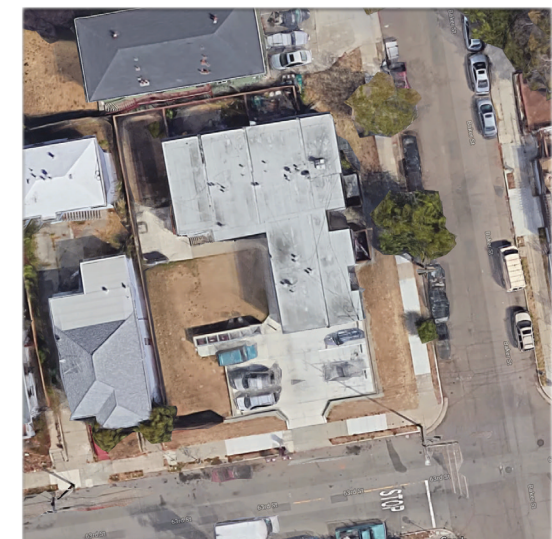
- Situated within heart of S.F. East Bay Area
- Within 5 mile radius of San Francisco and its main thoroughfares (I-80 and I-580)
- Many business and shopping districts relatively close (i.e Powell Street Shopping Center)
- Prime Location for low-income housing



MAP B: Site within context of Oakland, CA



Front View of Baker Street Property



Top-Down View of Baker Street Property

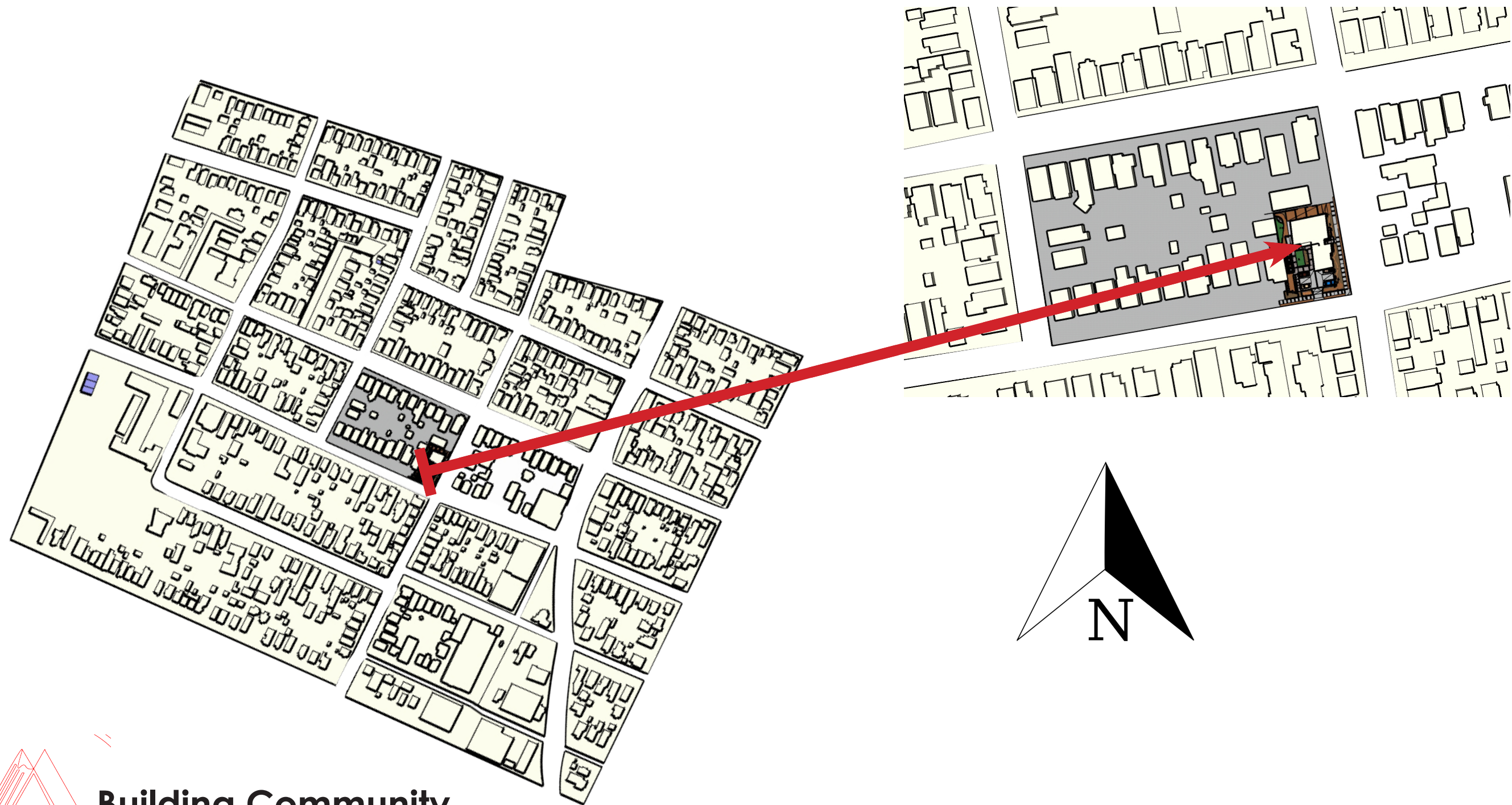
MAP A: Site within context of S.F. Bay Area; San Francisco to the left



# Site Context Continued

## Summary

- Built 1972
- Site Property ~.26 Acres
- 6 Apartments with three bedrooms each + balcony or ground level patio
- 1 designated parking space for each apartment

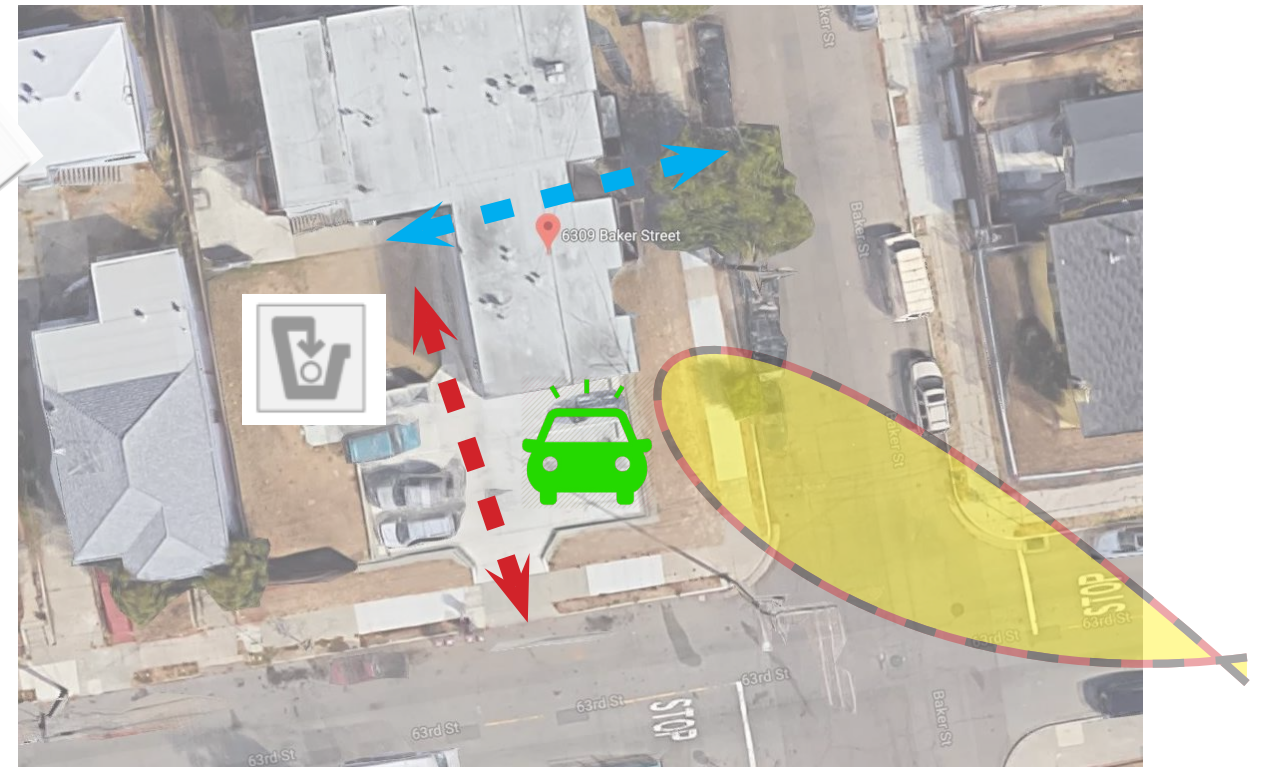
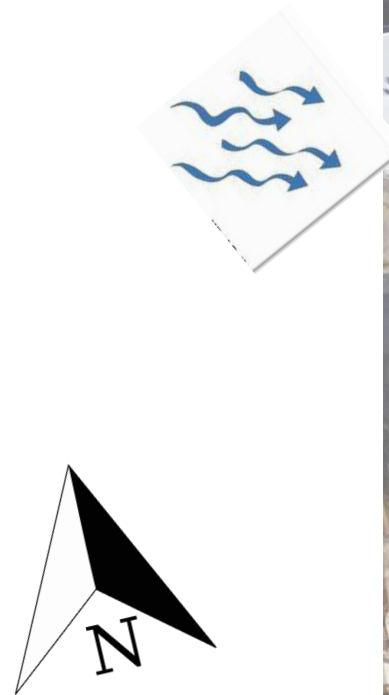
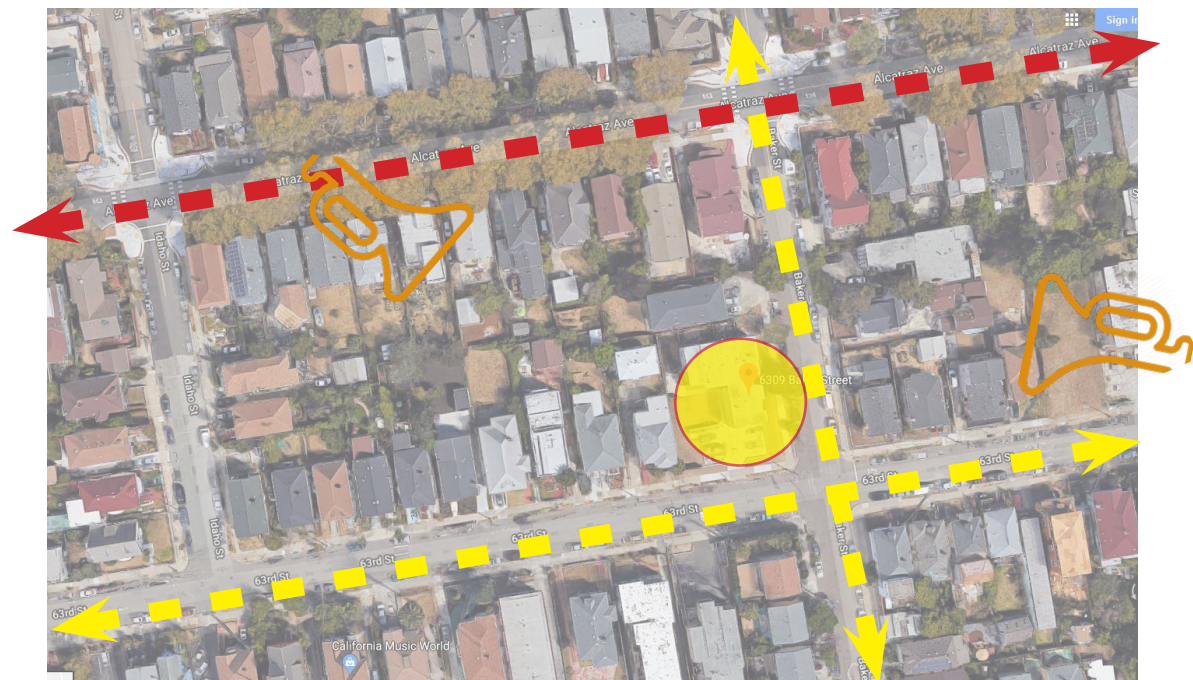




# Site Analysis

## Summary

- Coastal influences to moderate weather
- Site is within an open area- no shade cover
- Highly urban area; noise and light pollution
- Surrounding structures from early 20th century; many cars parked on street



- Medium to low trafficked area
- Main arterial street
- Site Area Highlighted
- Noise Sources

- Walkway for Humans
- Wind direction source
- Auto Parking
- Pedestrian and Auto Entry
- Path of Sun to Building



# Site Analysis

## Site Analysis Summary

The Baker Street Site possesses traits which make it advantageous to build community between residents and neighbors. This site possesses good circulation, grading, and climate. On the other hand, it has been noted that dumping and neglect of landscape maintenance make this site susceptible to quick degradation. When properly programmed, the Baker Street site will serve as a functional mutual meeting point and entertainment space.



Photo 1.1 Main courtyard area



Photo 1.2 Looking lot and trash pick-up from front of building

## Opportunities

- Great connectivity to Oakland city grid
- Great access for automobile and pedestrian access
  - Situated on corner for maximum visibility
- Ocean to moderate climate influence
- Existing division of space in site

## Constraints

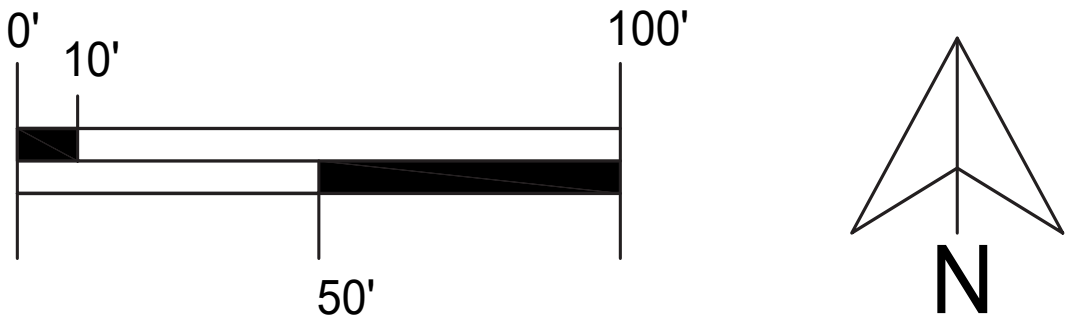
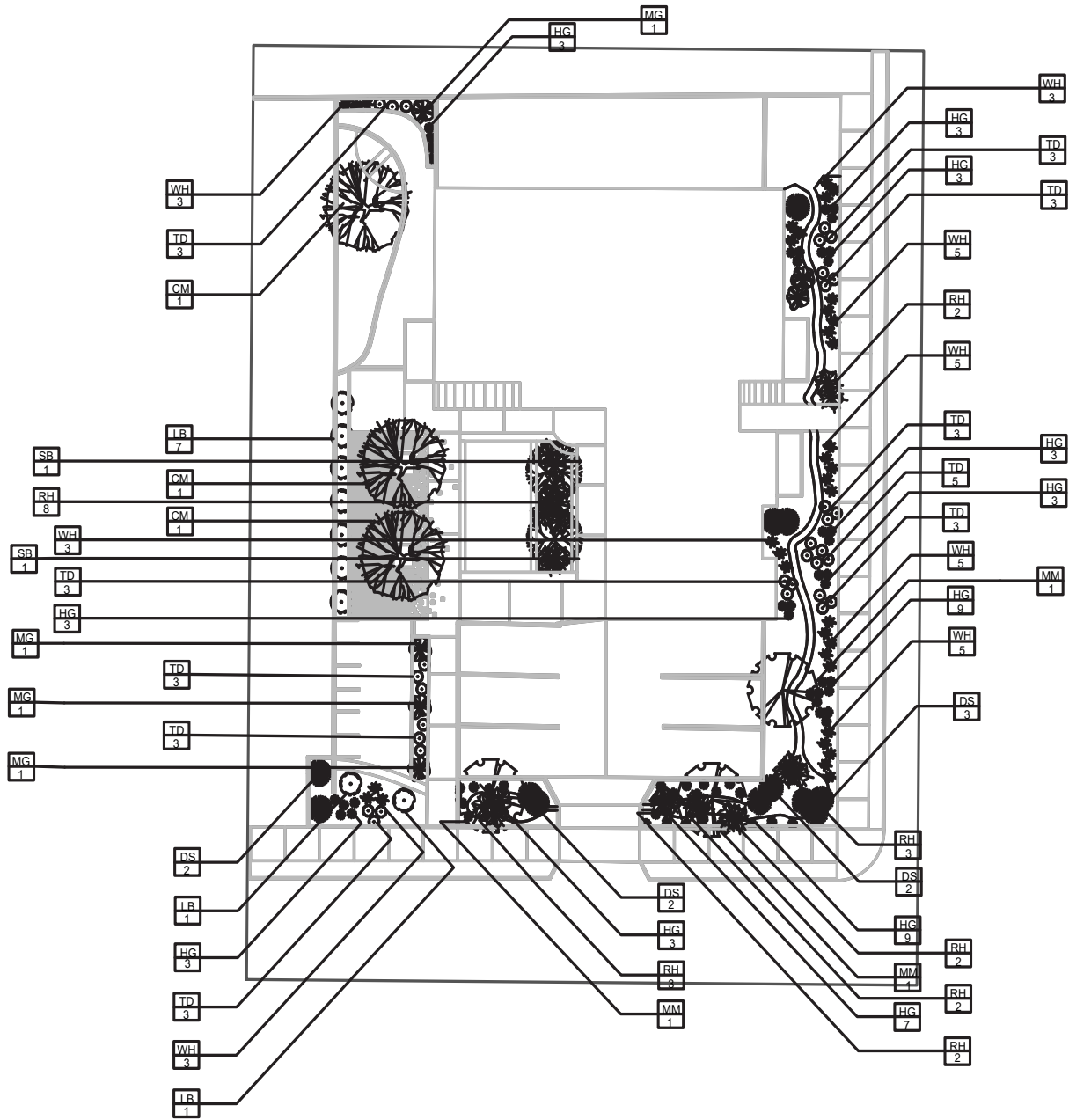
- Fair amount of vehicle noise
- Vandal and dumping fairly prevalent
- Site is bound between building and surrounding fence
- People can see into courtyard very easily
- Potential neglect of landscaping
  - Current Landscaping looks unmaintained



Photo 1.3 Front Perspective of Building



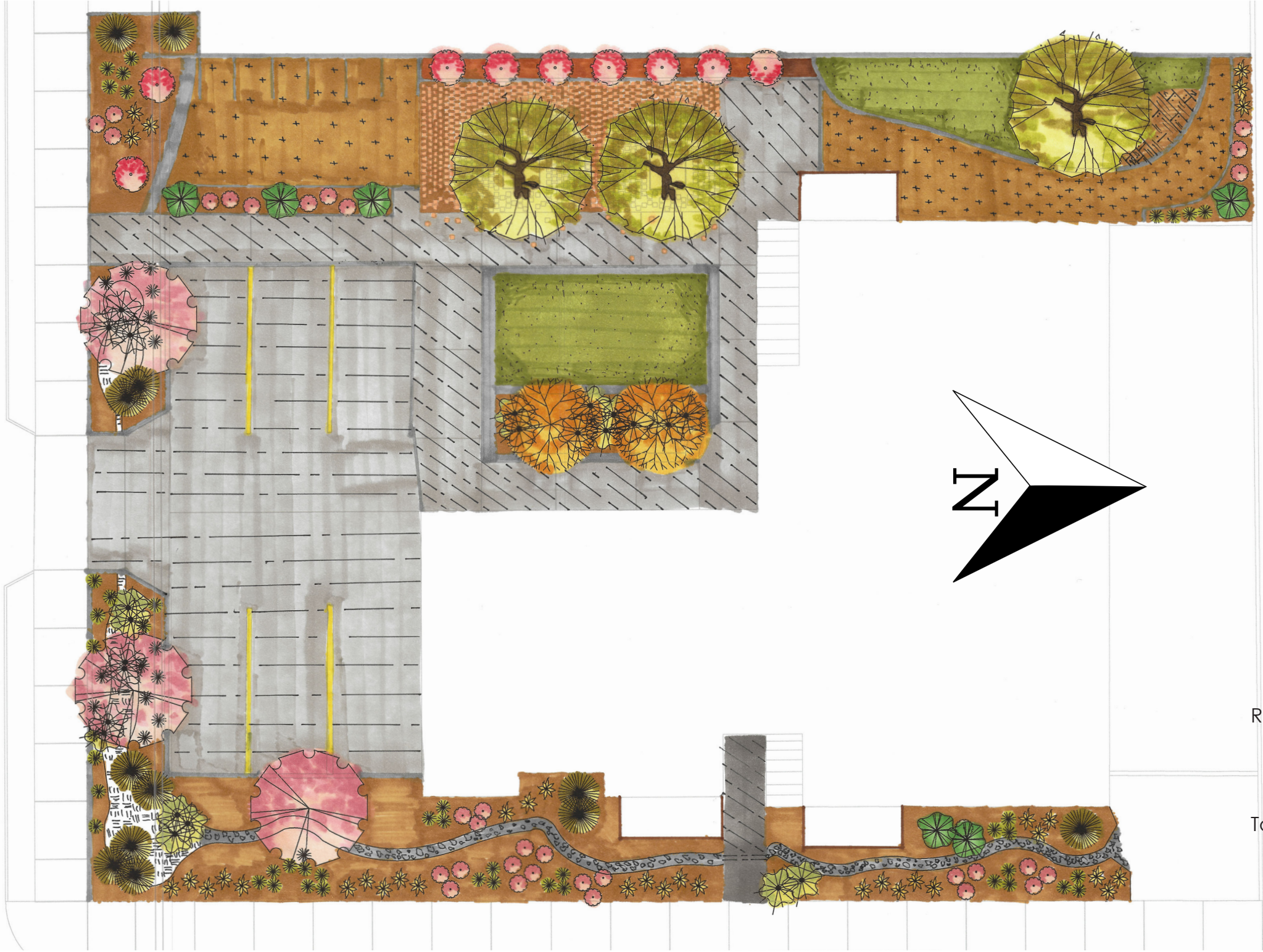
# Planting Plan



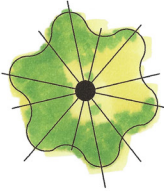
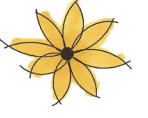
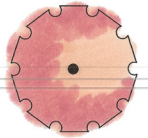
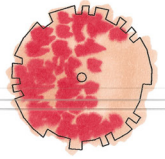


Tree and Plant Identification Table				Tree and Plant Identification Table Cont.			
Symbol	Scientific Name	Common Name	Call Sign	Height	Width	Water Use	Growth Form
●	Muhlenbergia Rigens	Deergrass	DS	3'-0" to 6'-0"	2'-0" to 3'-0"	Low	Grass
●	Molinia caerulea subsp. arundinacea	Moor Grass	MG	2'-0" to 3'-0"	1'-0" to 1'-½"	Medium to Wet	Grass
●	Juncus spp.	Rush	RH	2'-0" to 4'-0"	2'-0" to 4'-0"	Wet	Grass
●	Hakonechloa macra 'Aureola'	Hakone Grass	HG	1'-0" to 1'-6"	1'-0" to 1'-6"	Medium	Grass
●	Cornus alba "Sibirica"	Tatarian Dogwood	TD	4'-0" to 7'-0"	3'-0" to 5'-0"	Medium	Shrub
●	Erica carnea 'Springwood White'	Winter Heath	WH	0'-6" to 1'-0"	0'-6" to 1'-6"	Medium	Shrub
●	Lagerstroemia Tuscarora	Crape Myrtle	CM	2'-0" to 16'-0"	2'-0" to 16'-0"	Medium	Tree
●	Amelanchier spp.	Shadbush	SB	25'-0" to 30'-0"	15'-0" to 20'-0"	Medium	Tree
●	Arbutus 'Marina'	Marina Madrone	MM	10'-0" to 15'-0"	10'-0" to 15'-0"	Medium	Tree
●	Callistemon viminalis	Little John Dwarf Bottlebrush	LB	3'-0" to 5'-0"	3'-0" to 5'-0"	Medium	Shrub



# Hand Rendered Planting Plan



- Crape Myrtle 
- Arbutus "Marina" 
- Shadbush 
- Deergrass 
- Moor Grass 
- Hakone Grass 
- Rush 
- Winter Heath 
- Tatrian Dogwood 
- Little John Dwarf Bottlebrush 



# Plant Palette Sample Photos



Crape Myrtle  
*Lagerstroemia Tuscarora*



Marina Madrone  
*Arbutus 'Marina'*



Shadbush  
*Amelanchier spp.*



Deergrass  
*Muhlenbergia Rigens*



Moor Grass  
*Molinia caerulea subsp. arudinacea*



Hakone Grass  
*Hakonechloa macra 'Aureola'*



Winter Heath  
*Erica Carnea 'Springwood White'*



Little John Dwarf Bottle Brush  
*Callistemon viminalis*



Rush  
*Juncus spp.*

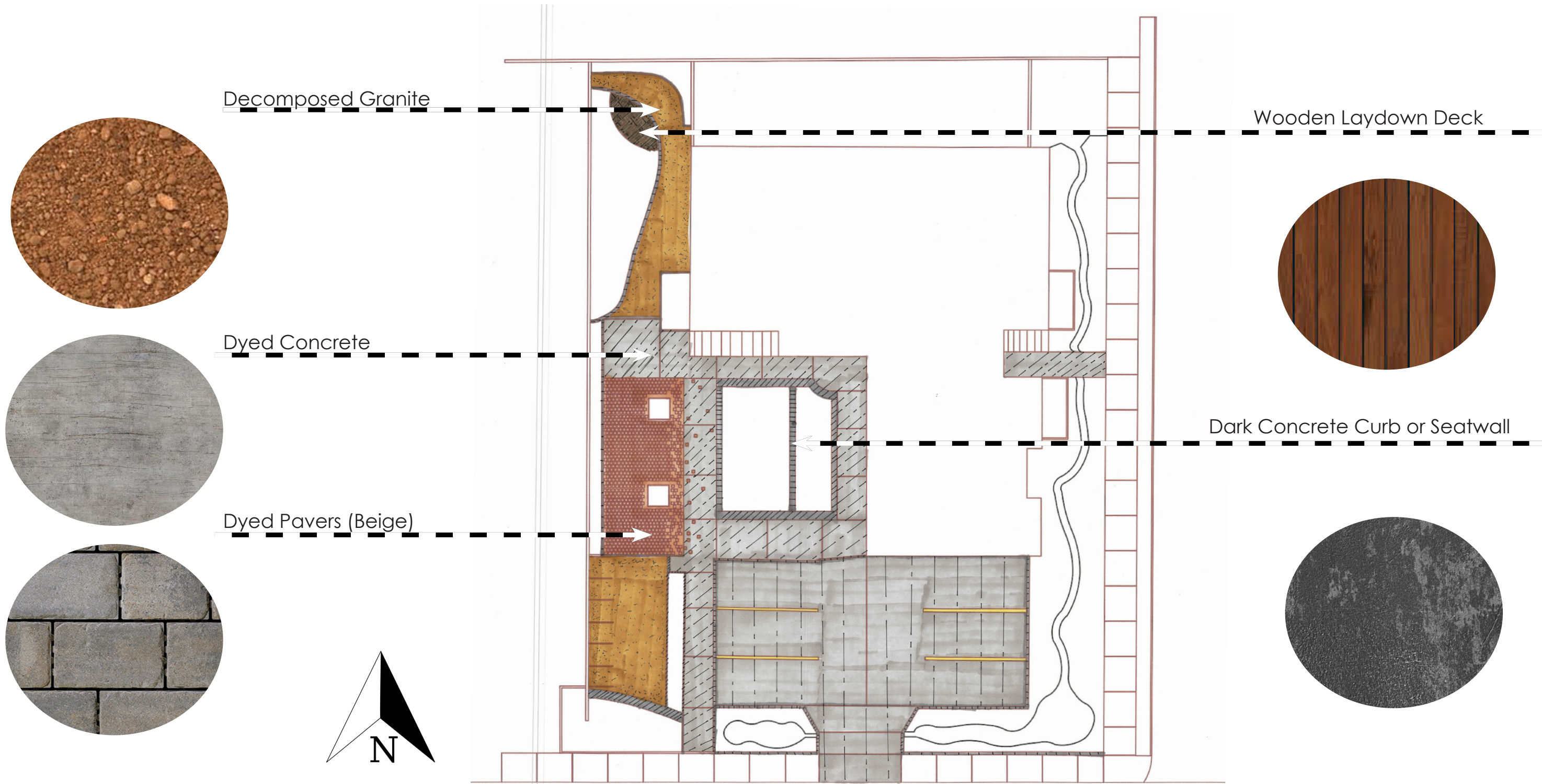


Tatarian Dogwood  
*Cornus alba 'Sibirica'*



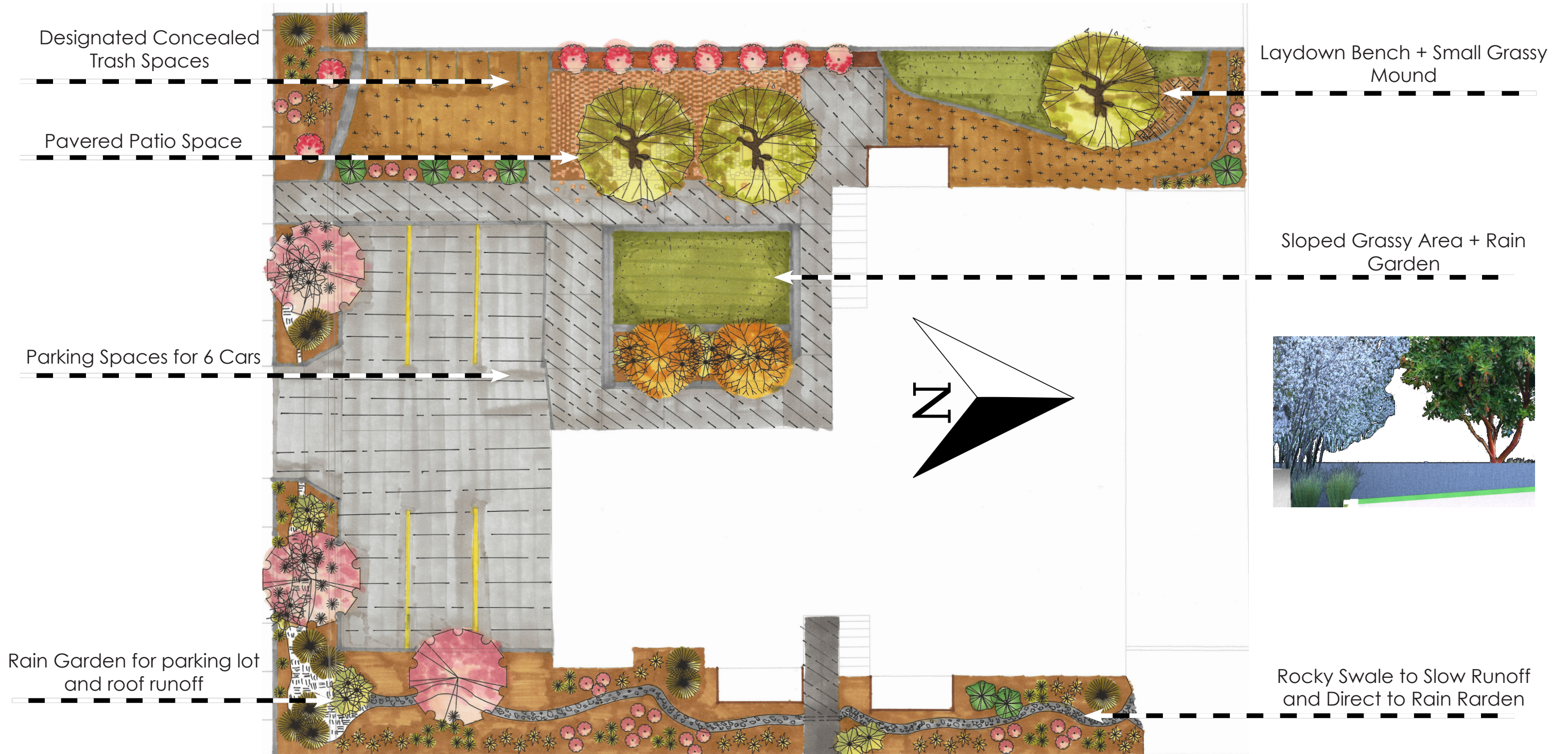


# Hardscape Summary





# Site Ammenities Summary





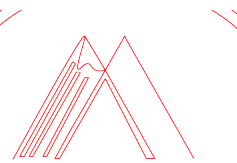
# Front View (63rd Street)



Perspective SE Corner

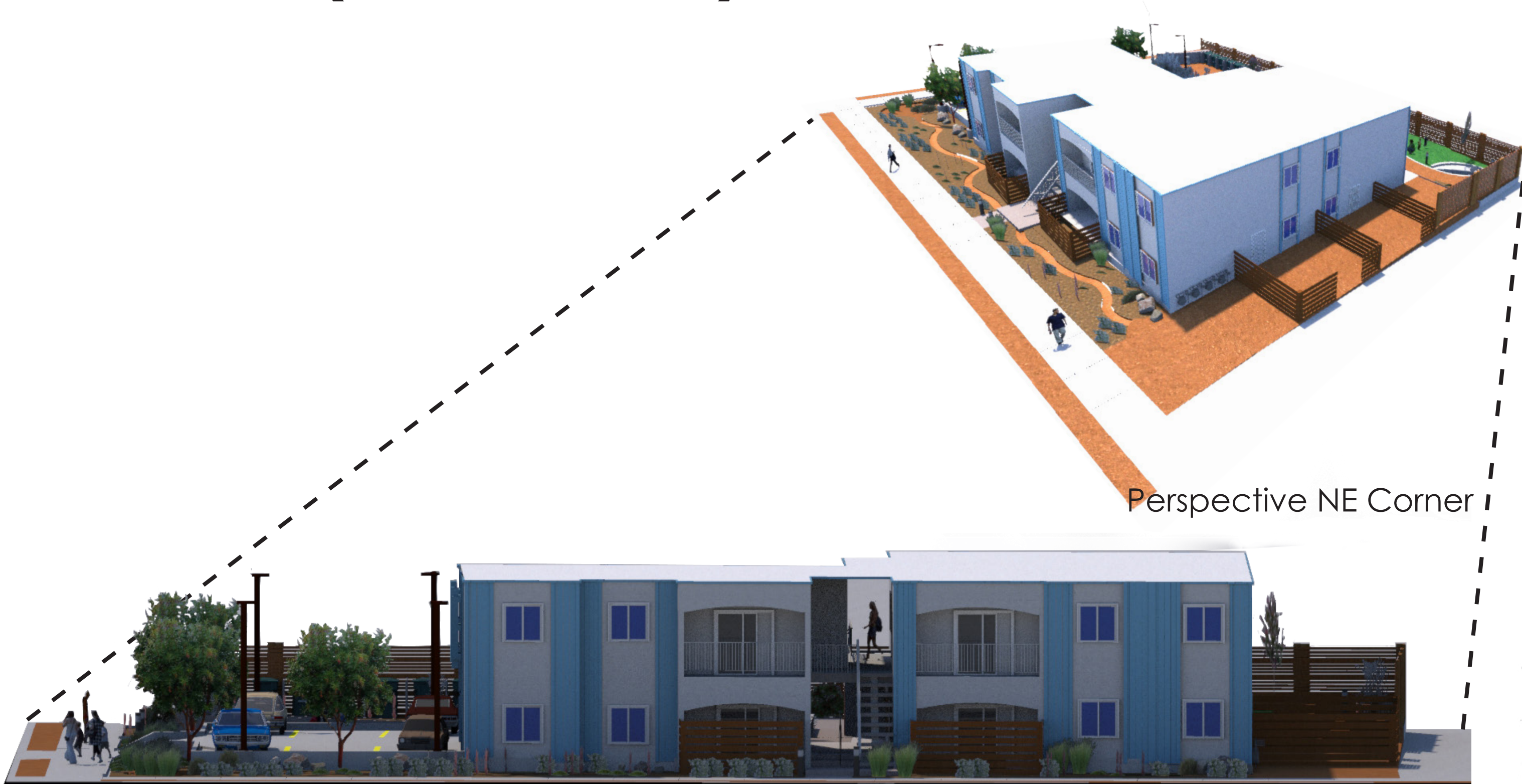


Front View - 63rd Street





# Side View (Baker Street)



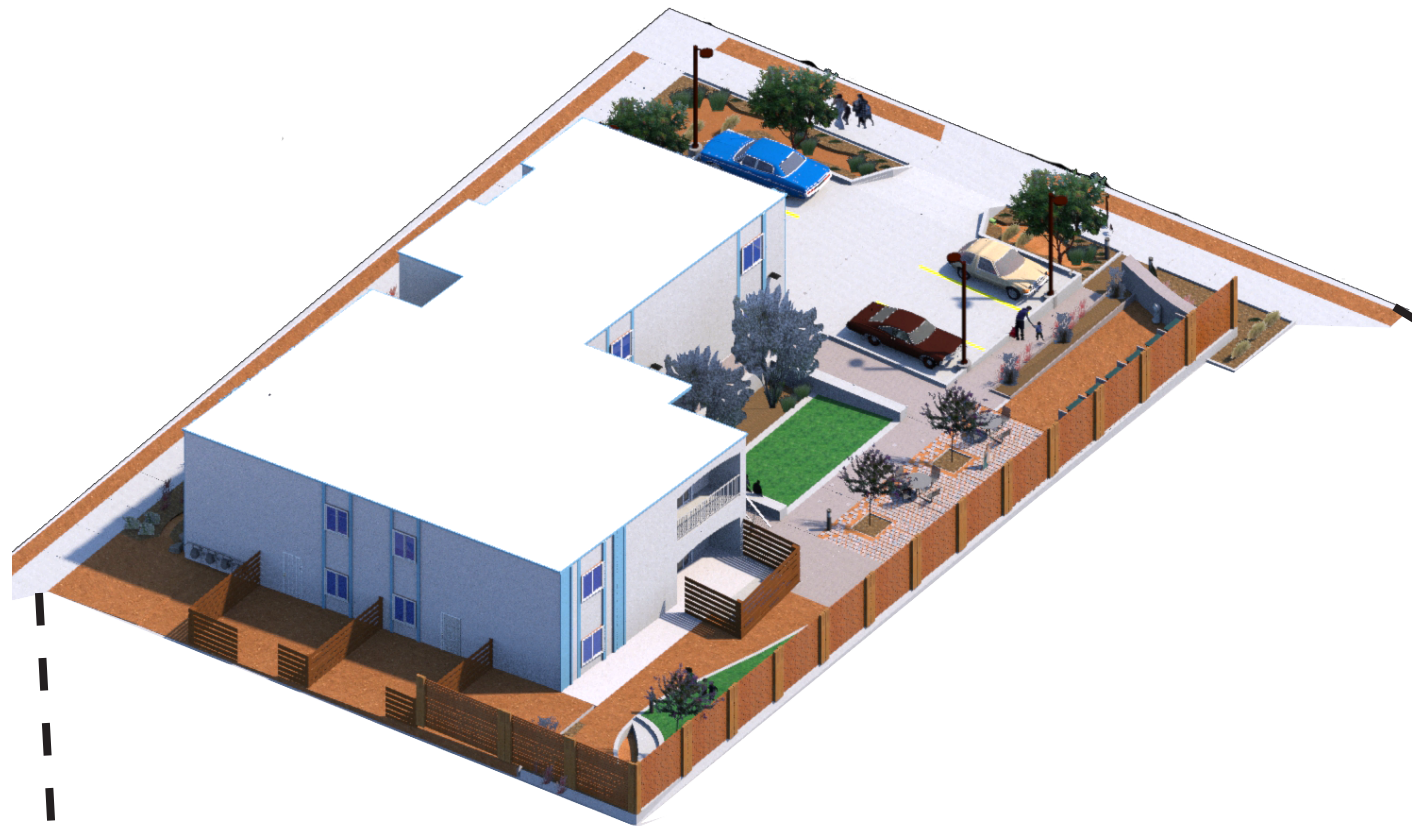
Perspective NE Corner

Side View- Baker Street

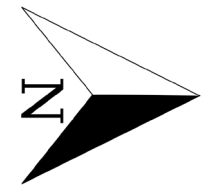




# Full Site Cross-Section (Main Courtyard)



Perspective SE Corner

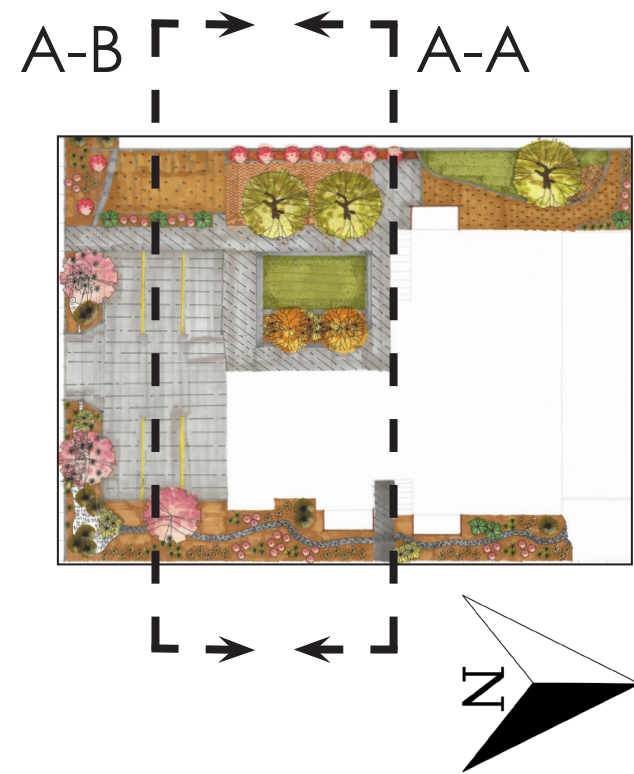


Cross-Section Main Courtyard





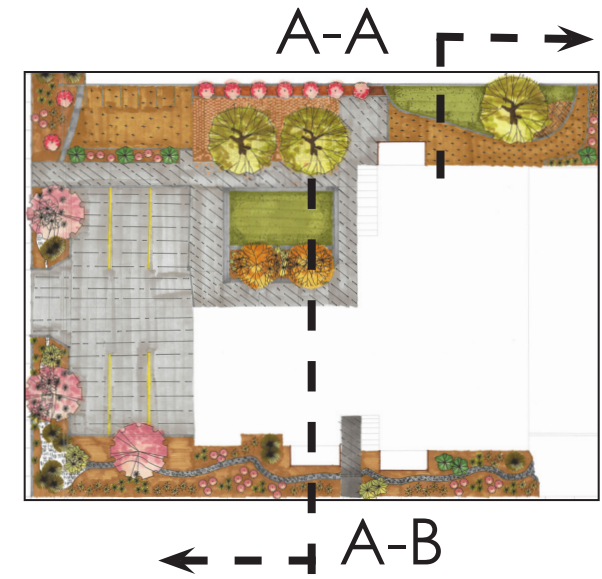
# Main Courtyard Renderings



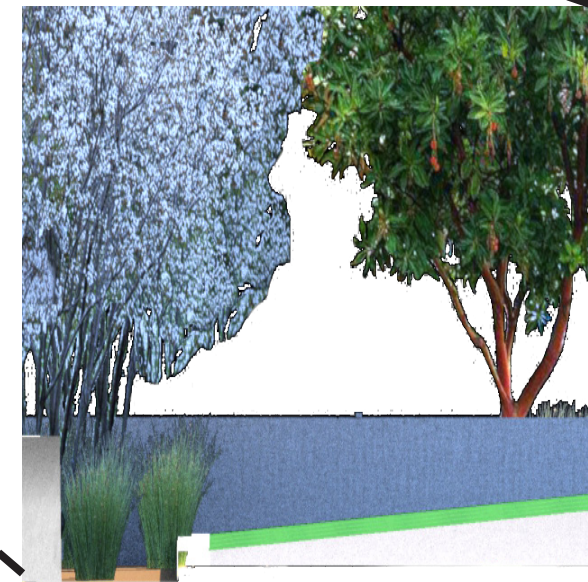
Section Cut A-B



# Inner-Courtyard & Main Courtyard Rendering



Section Cut A-A



Section Cut A-B



**Building Community.**