

DESIGN CONCEPT

The following design is an interpretation of a solution for the OHA community complex location at 6309 Baker Street, Oakland, CA. Located in the heart of the East Bay, this complex contains 6 units that are vital for the community in the area. This document explores the possibility of remodeling the facade of the complex and implementing a new design for the courtyard area. A multifunctional space that can accommodate for various programs is ideal for the development of this site. There are pockets that create the opportunity of private spaces. Circulation through the space is clearly defined by using planters and sitting walls to delineate each space. The circular shapes demand for public areas, whereas the linear spaces indicate order and calmness.

My intent is to create elements that wrap around the building and bring the whole site as one component within the neighborhood. Vehicular circulation has been drastically changed. Defining the entrance of vehicles in the South area and exiting in the East adds more order to the space without compromising the parking space available. The trash bins have been relocated to minimize human interaction while circulating through the space. Stairs and ADA ramps have been placed in order to access the street and the courtyard. Vegetation has been selected as to minimize watering duties. However, constant trimming should be done to keep the landscape at its optimum conditions.

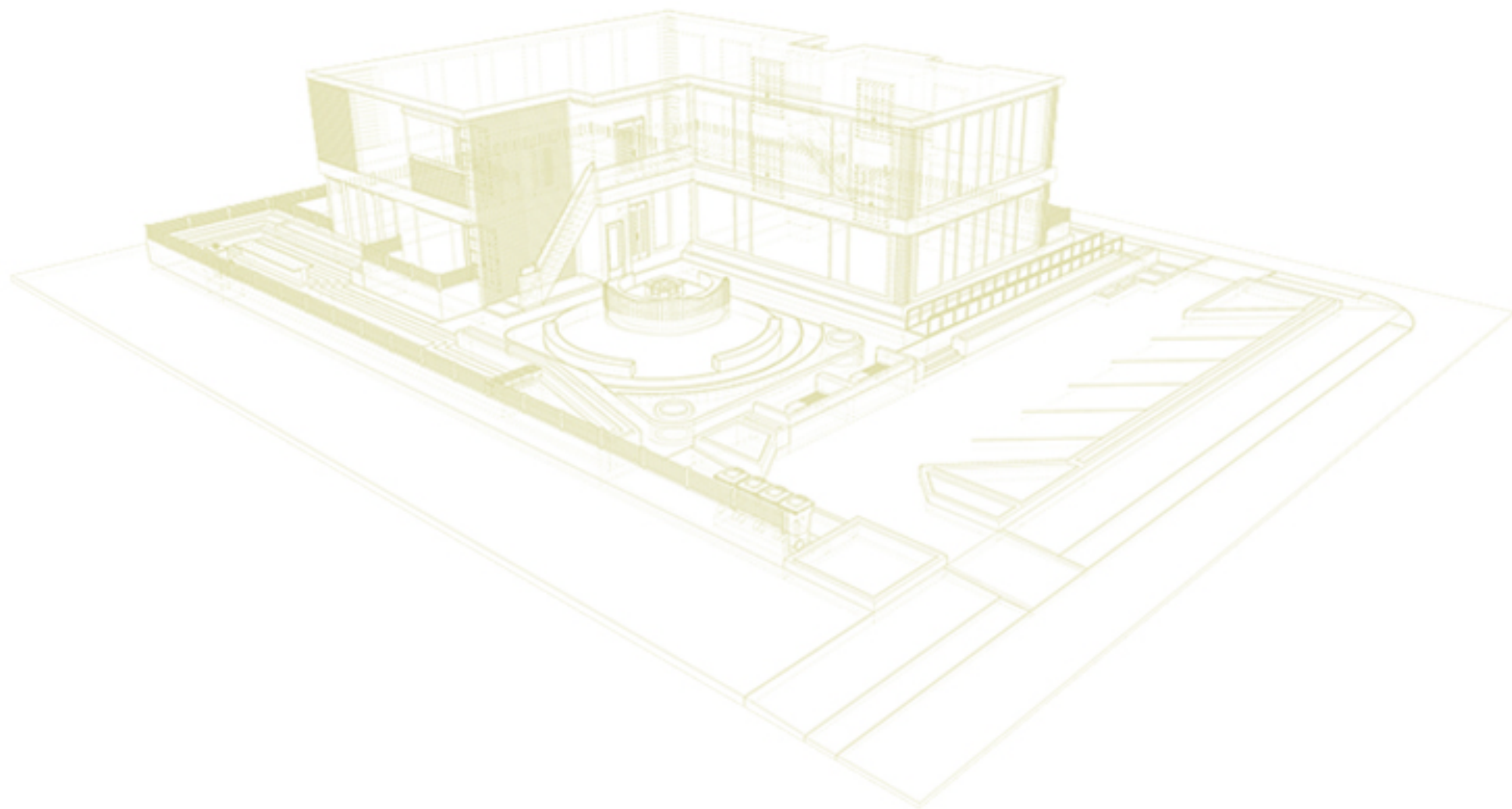
3609 BAKER STREET

OAKLAND, CA.

This property is approximately 10,800 square feet in area. The two two story apartment building, constructed in 1972 has six three-bedroom units.

The second floor units are accessed via an exterior staircase. Currently, no landscape irrigation exists. There is a small concrete parking lot, covering about 50 percent of the front property.

There is open parking on the streets - which might only be limited by street sweeping schedules.



SITE GRAPHICS

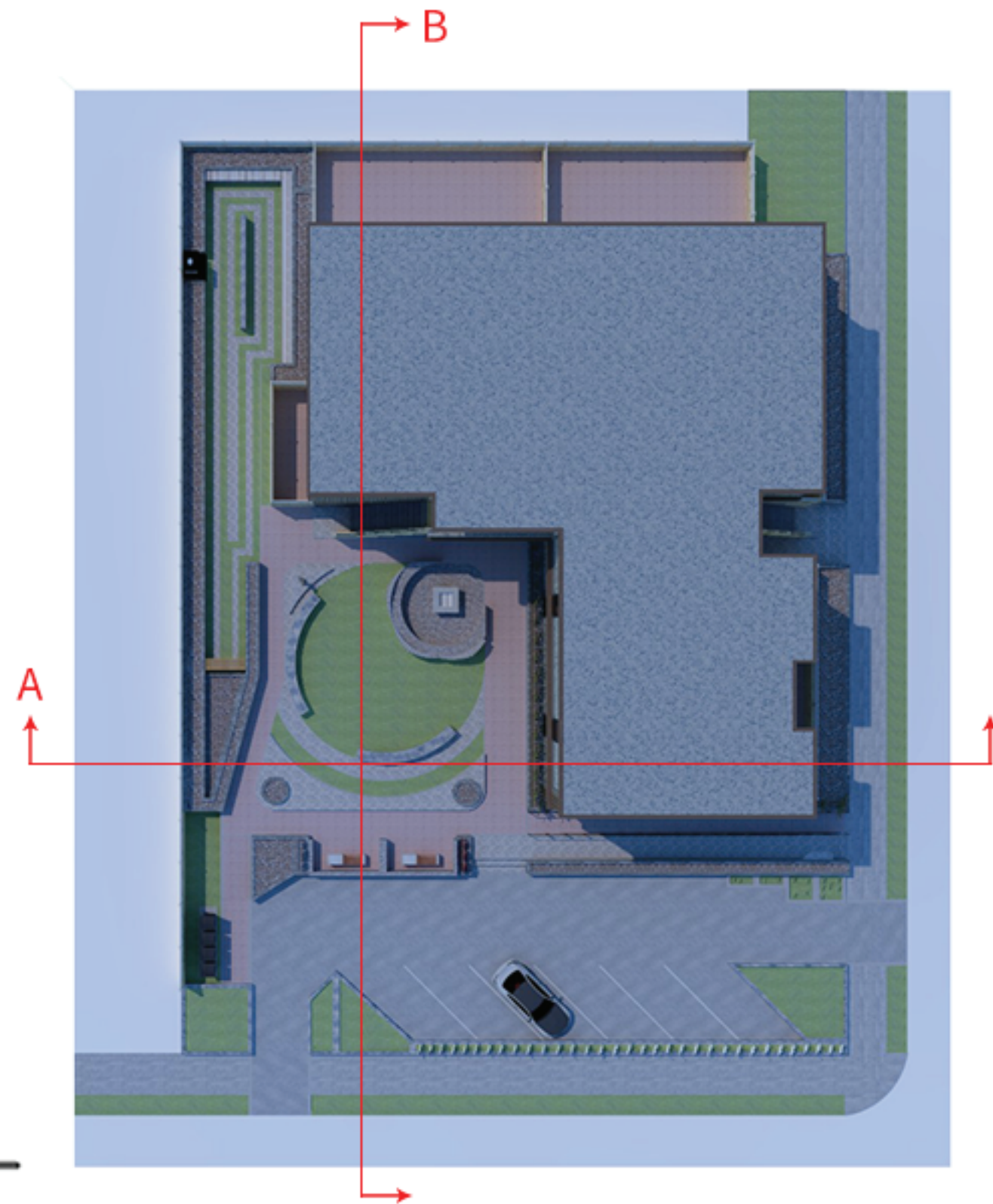
Section cuts showing the location of hardscape and softscape within the site. Hardscape elements containing vegetation as well as elements that are independent from the hierarchy of the building

Plan View

Section Cut A

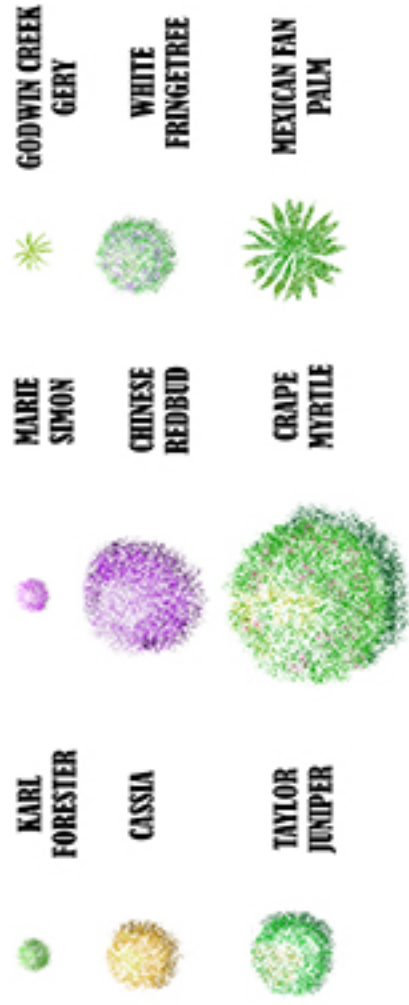


Section Cut B

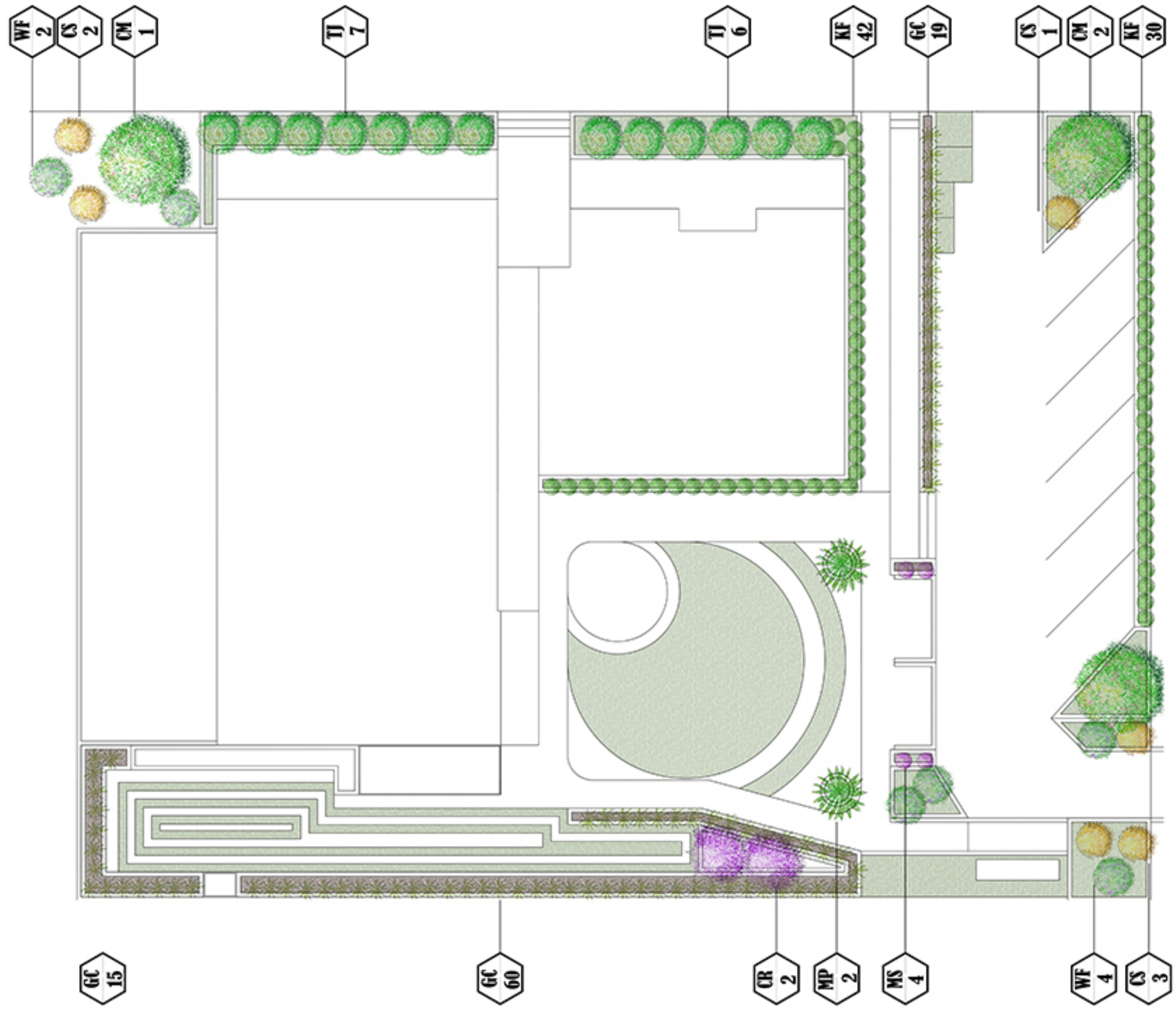


PLANTING PLAN

6309 BAKER STREET, OAKLAND

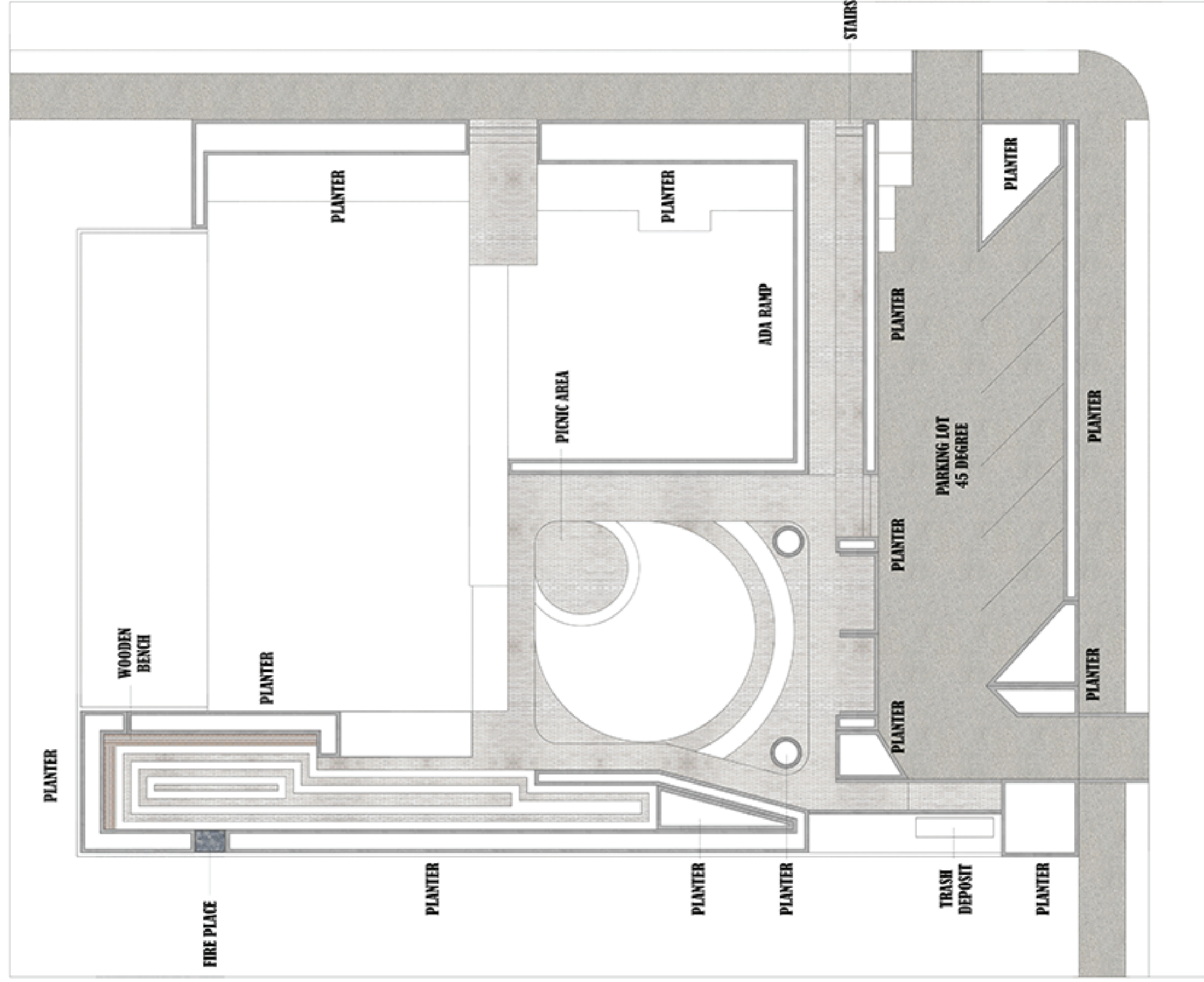


COMMON NAME	SCIENTIFIC NAME	DIAMETER OF CROWN	TOTAL HEIGHT	WATERING LEVEL	TYPE	ABBREVIATION
Karl Forester	<i>Calamagrostis X acutiflora</i>	1.5 - 2.5 feet	3 - 5 feet	Medium / Low	Shrub	KF
Marie Simon	<i>Ceanothus X pallidus</i>	2.5 - 5 feet	3 - 5 feet	Low	Shrub	MS
Godwin Creek Grey	<i>Lavandula X gingival</i>	2 - 3 feet	2 - 3 feet	Low	Shrub	GC
Chinese Redbud	<i>Cercis chinensis</i>	8 - 10 feet	13 - 15 feet	Low	Tree	CR
White Fringetree	<i>Chionanthus virginicus</i>	8 - 10 feet	8 - 11 feet	Low	Tree	WF
Cassia	<i>Cassia surattensis</i>	8 - 10 feet	10 - 12 feet	Medium / Low	Tree	CS
Taylor Juniper	<i>Juniperus Virginiana</i>	3 - 4 feet	15 - 20 feet	Medium / Low	Tree	TJ
Grape Myrtle	<i>Laportea</i>	10 - 15 feet	18 - 20 feet	Medium / Low	Tree	GM
Mexican Fan Palm	<i>Washingtonia robusta</i>	6 - 10 feet	28 - 30 feet	Medium / Low	Palm	MP
Liac Vine	<i>Hardenbergia violacea</i>	10 - 15 feet	10 - 15 feet	Low / Very Low	Vine	LV



HARDSCAPE PLAN

6309 BAKER STREET, OAKLAND



EXPLODED AXONOMETRIC

There are two fire pits, one on each courtyard. Extensive sitting spaces are available to accommodate large amount of users. The hardscape is identified by concrete planters and masonry walkways. The property boundary is also a masonry wall with a wooden fence topper.



Frame view of the wooden bench, small courtyard fire pit, and labyrinth.

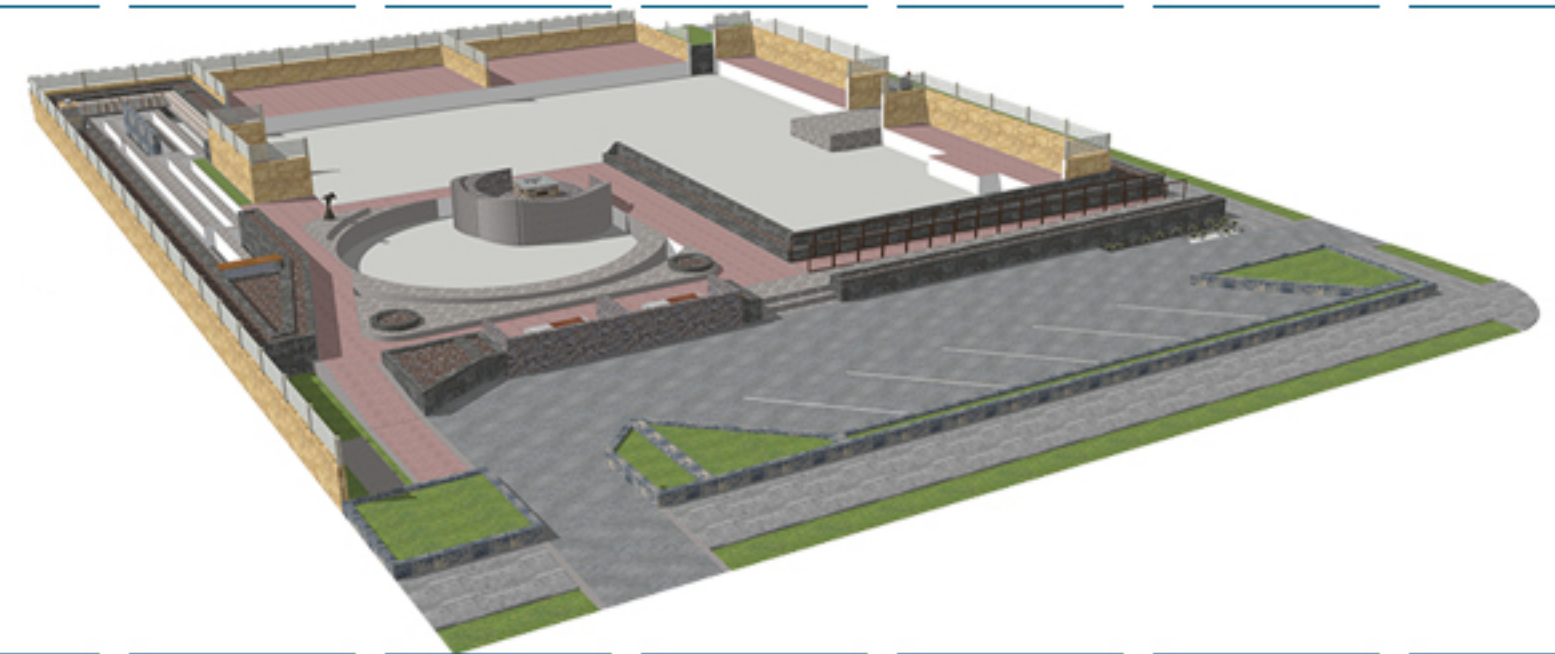


Fire pit at main courtyard gathering area



COMPLETE MODEL

Illustration of the elements that create the sight as a whole component.

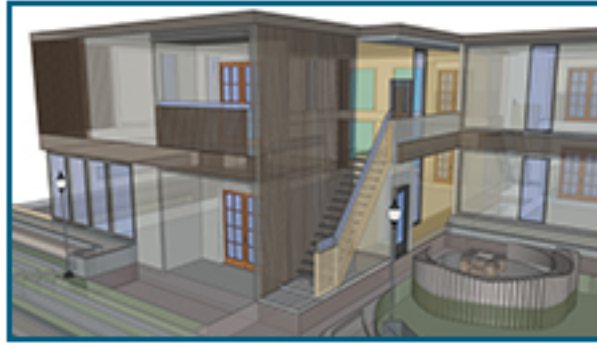


HARDSCAPE MODEL

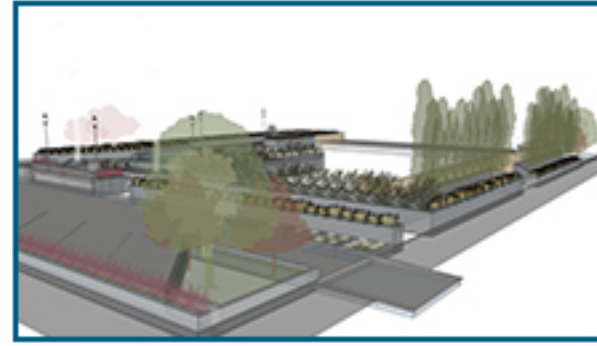
Shows features like the gathering areas, benches, sitting walls, and walkways.

EXPLODED AXONOMETRIC

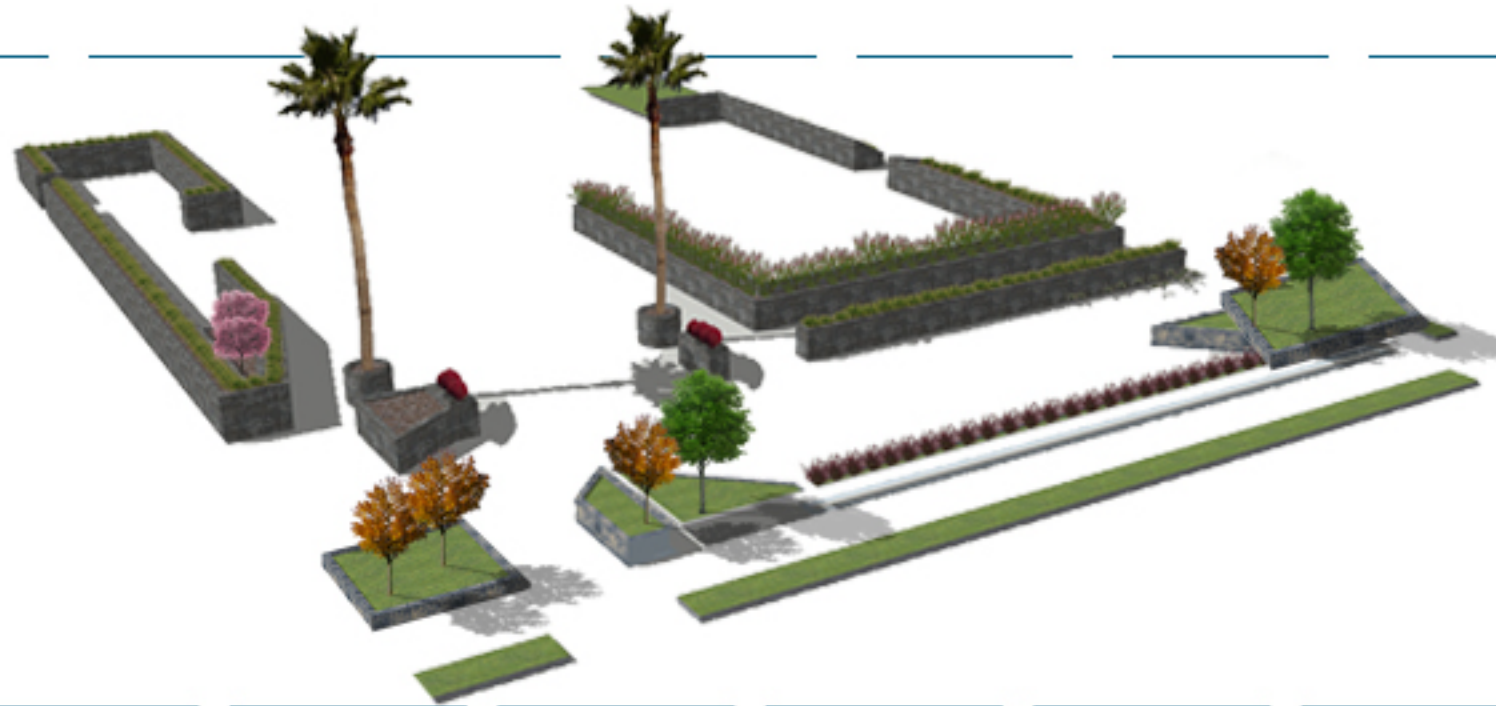
The relationship of the building and the courtyard is critical. Therefore a well balanced softscape design wil bring live and color to the whole site. The colors of the vegetation and the colors of the building's finishes must blend into one identity.



Scope of different facade elements that enhances the complex building.

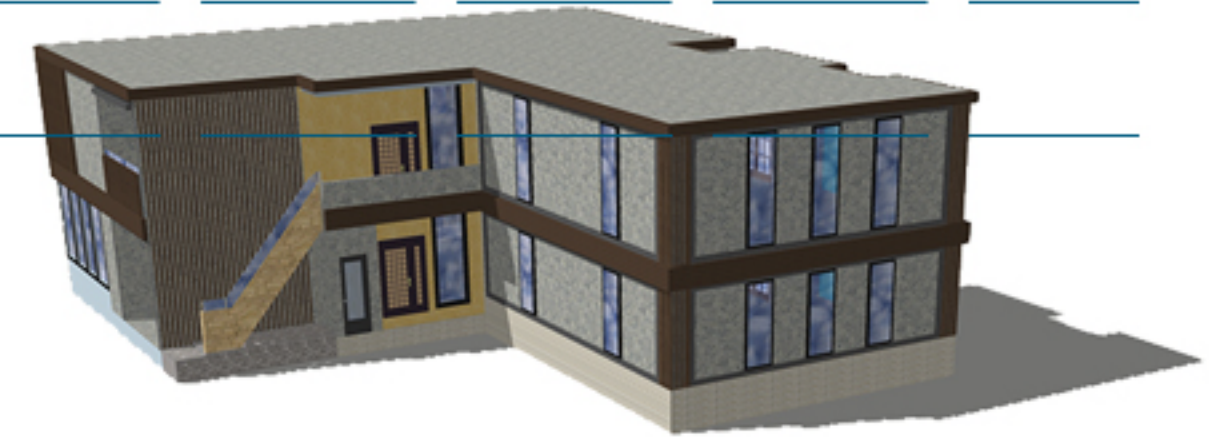


General location of big tres from the East South location



SOFTSCAPE MODEL

Highlights the choosen vegetation within the area of design. Trees, Shrubs, and ground cover.



BUILDING MODEL

Shows a modern facade that embraces the continuity of the elements within the courtyard design.

EAST ENTRANCE

PEDESTRIAN ONLY ACCESS

The East entrance receives all the morning sun. By planting Taylor Junipers we can prevent excessive morning light into the units. There are two main pedestrian entry access. The stairs lead to the units located in the second floor of the property, while the hallway leads to the units of the first floor. An ADA ramp is located at the south area of the building. This allows for easy access to the unit and the courtyard.



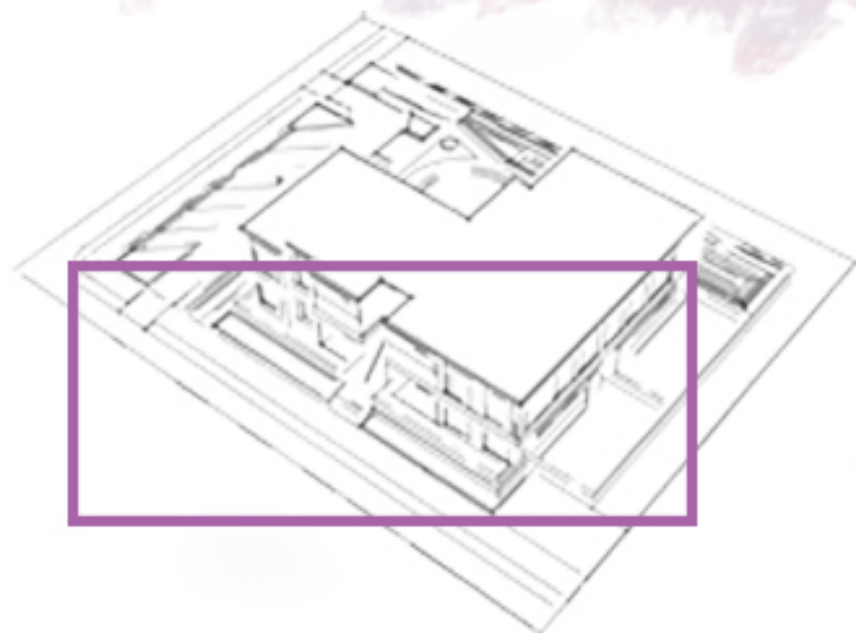
ADA Ramp Access

2 Step access

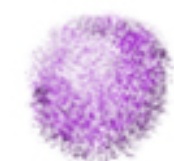
Stairs to Second Floor

First Floor Entrance

STAIR ACCESS



ADA RAMP



Chinese Redbud



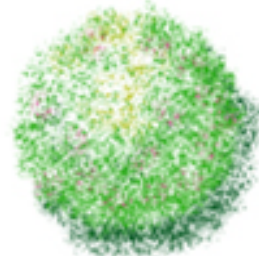
Taylor Juniper



Cassia



Marie Simon



Crape Myrtle



Karl Forester



Goodwin Creek Gery



BACK COURTYARD

CONTEMPLATIVE SPACE

This area is quite and private. Laberrints have been used as mediums for meditation. The walking space is made of masonry and ground covers, thus allowing a perfect balance of softscape and hardscape. A green fence follows the boundary of the site to embellish the views. The Stone fire pit allows the users to stay warm. A wood bench wraps around the laberint and provides a vast amount of sitting space.

Stone Fire Pit

Modern Laberint

Ceramic Table

Wood Bench





Fire Place
Provides heat and enhances this gathering space.



LABERINT

Ground cover and masonry that wraps around the courtyard to bring the whole space into context.



PROPOSED DESIGN



Current Design

PROPOSED DESIGN



Current Design