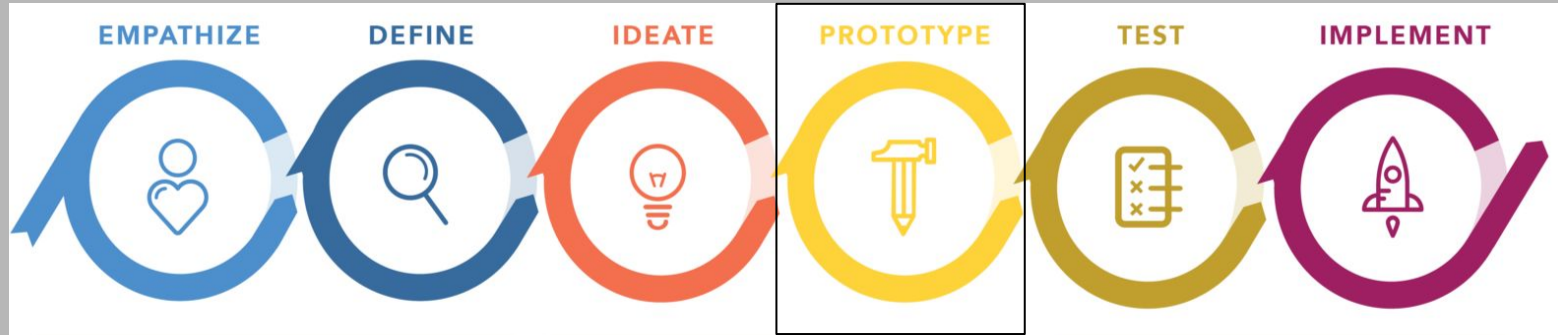


83rd Avenue Design Project

Project Essential Questions: When we design sustainable housing in East Oakland, what do we envision? How can we use design skills to create a sustainable and affordable housing design for a site in East Oakland?

By: Esmeralda C., Mariah A., Gaby C., Jisselle H.,

Design Process



- Empathize - We talked to Ms.Barbara about the changes she would like to see.
- Define - We did a SWOT Analysis on the current building.
- Ideate - Bubble designs.
- Prototype - Sketchup Model

Community Engagement



- One key point we have learned from the interview was that Ms. Barbara wanted a natural brown tone color, windows with an outside view of the street, and maintenance for the overall complex.
- We applied this info into deciding and being able to create this current design through applying all these design aspects into the building, so residents can feel safe and satisfied.

Quote: “I wish we had windows with an outside view of the street”

Existing Conditions on Google Maps

The image shows a Google MyMaps interface. On the left, a sidebar displays the map's title 'Site visit- Mariah Alvarez' and a list of layers. The 'Weakness- Burned building' layer is selected and highlighted. The main map area shows an aerial view of a residential neighborhood with several colored markers. A white information window is open over a red location pin, titled 'Weakness- Burned building'. This window contains a photograph of a severely damaged, charred building with blackened walls and a dark, hollowed-out window. Below the photo, the coordinates '37.76084, -122.16722' are displayed. The map background includes street names like 'Richie St', '80th Ave', 'Dowling St', '82nd Ave', 'MacArthur Blvd', and '83rd Ave', along with various landmarks such as 'Aspire College Aca', 'St Benedict's Church', 'Rudsdale Newcomer High School', and 'Center of Hope Community Church'.

Site visit- Mariah Alvarez
9 views
All changes saved in Drive

Add layer Share Preview

Untitled layer

- Individual styles
- Weakness- sidewalk
- Strength-Still having Housing
- Weakness- Burned building**
- Strength- Trees/Grass
- Opportunities- Sidewalks/Mi...
- Opportunities-Burned down ...

Base map

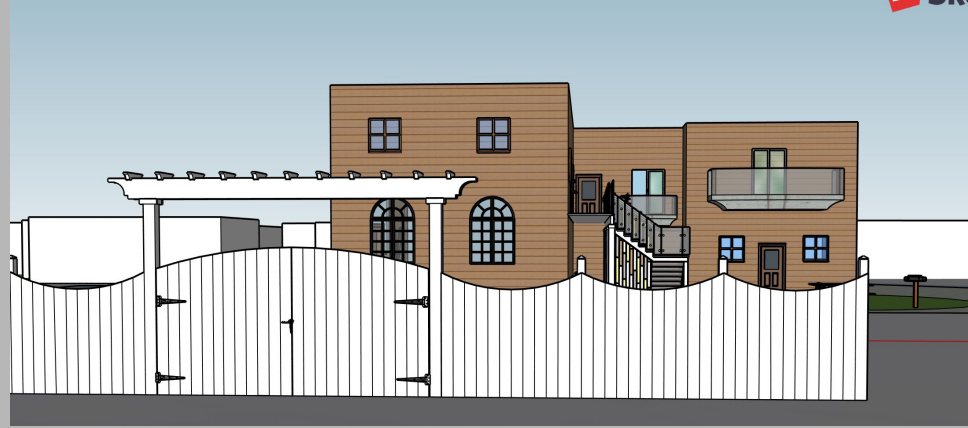
Weakness- Burned building

37.76084, -122.16722

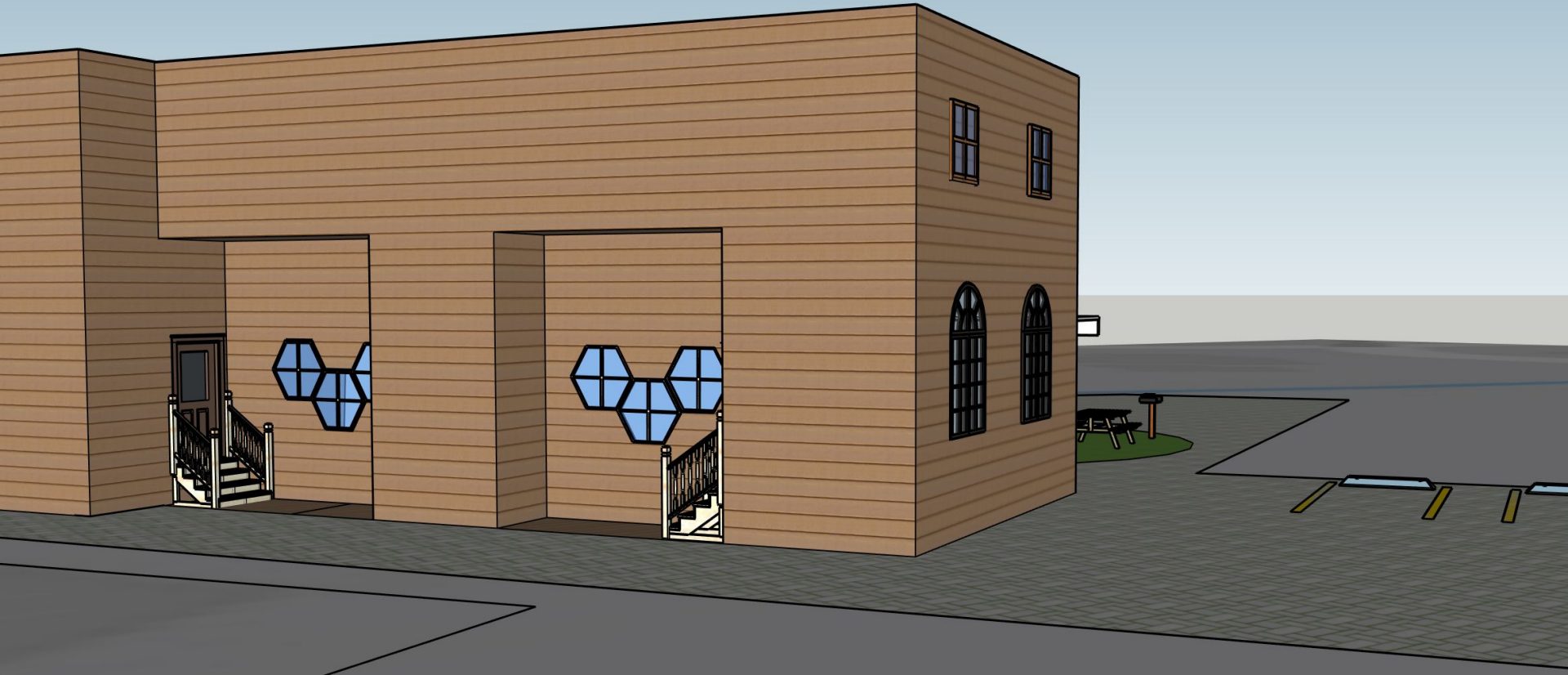
https://www.google.com/maps/d/edit?mid=1CLM3aRqH7zd5znCA_9BmhOrRNHL6Qg3L&ll=37.76162758784512%2C-122.16726935000003&z=18

Site Design

- The building footprint will remain the same.
- The buildings footprint is 2,813 square feet
- We wanted to improve the look of this site by keeping the current location/position of the building without having to do many drastic changes



Site Design - View 2



This side view perspective shows Ms.Barbara's unit complex which demonstrates the side building footprint , which is 2,813 square feet, and its exterior

Site Design - View 3



Seating/Recreation Area

- Benches
- ❖ We chose to add benches in the middle of the complex to give the residents freedom to have gatherings or BBQ's.



Building Siding Material

- *The type of material and color we will use for the siding of the building, would mainly be natural wood, which would be a natural wooden brown .*
- *This material is easier to maintain, its sustainable, and its cheaper in the long run.*



Paving Material

- We want Permeable for driveway
- We want Stones for pathway on other other paved areas
- We chose these materials because their sustainable and easier to keep in good conditions



Landscaping

- Drought tolerant plants such as

Ex; succulents, cactus, yarrow, russian sage, coyote bush, etc.
- They don't require much water, or maintenance
- Flowers, plants, etc.



Streetscape

- We want to add speed bumps and planter strips
- We chose these improvements so people can take their time while driving and the street can look nice



Creek Connection/Improvements

- We are thinking of adding a bridge to the creek to make it look nice and safe
- We will also like to see a gate to keep it clean and efficient with solar light monitors

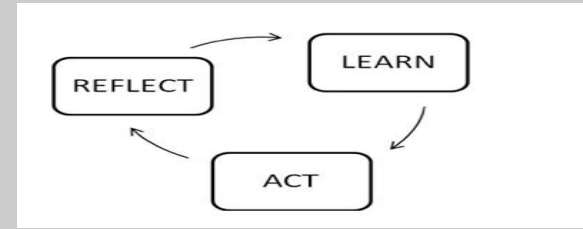


Community Sustainability

- These design improvements will create a better and more sustainable life for the housing resident, through applying efficient materials/resources for this apartment complex to improve the efficiency and aesthetic aspects of the outside building.
- This streetscape improvement will create a better and more sustainable neighborhood by giving it a better appearance
- Building a gate along with a bridge will create a safe environment.



Reflection



- Something we learned from this project is building takes time, lots of dedication, and patience.
- The prototype/ Sketchup was the most challenging part.
- The ideate was the easiest because we already had an idea of what we wanted we just used Ms. Barbara's needs for the building.
- We would of tried to figure out how to use sketchup faster.