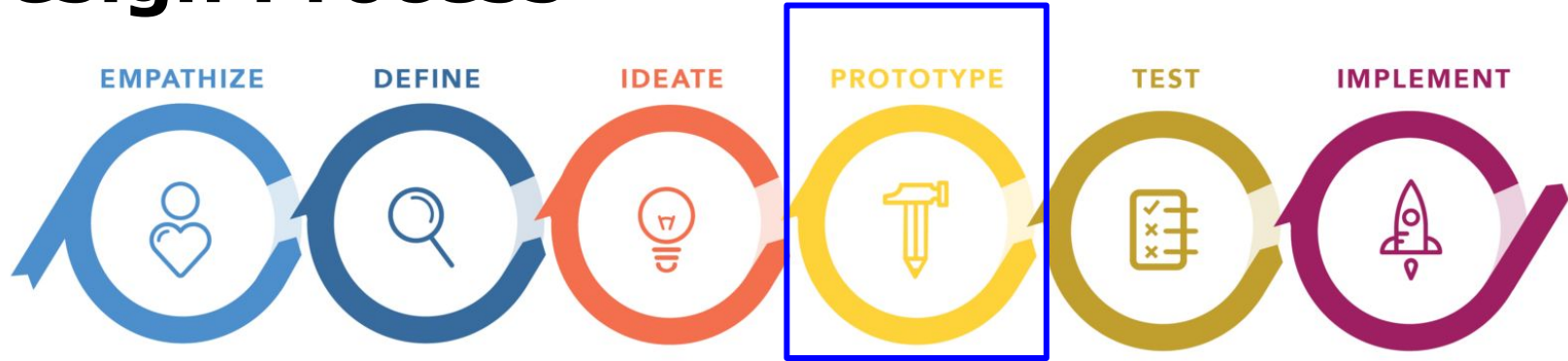


# 83rd Avenue Design Project

Angel Tapia, Isaack P

**Project Essential Questions:** *When we design **sustainable housing** in East Oakland, what do we **envision**? How can we use design skills to create a sustainable and **affordable housing design** for a site in East Oakland?*

# Design Process



*Empathize: We talked to Ms.Barbara.*

*Define: We identified the problems we needed to solve for the house.*

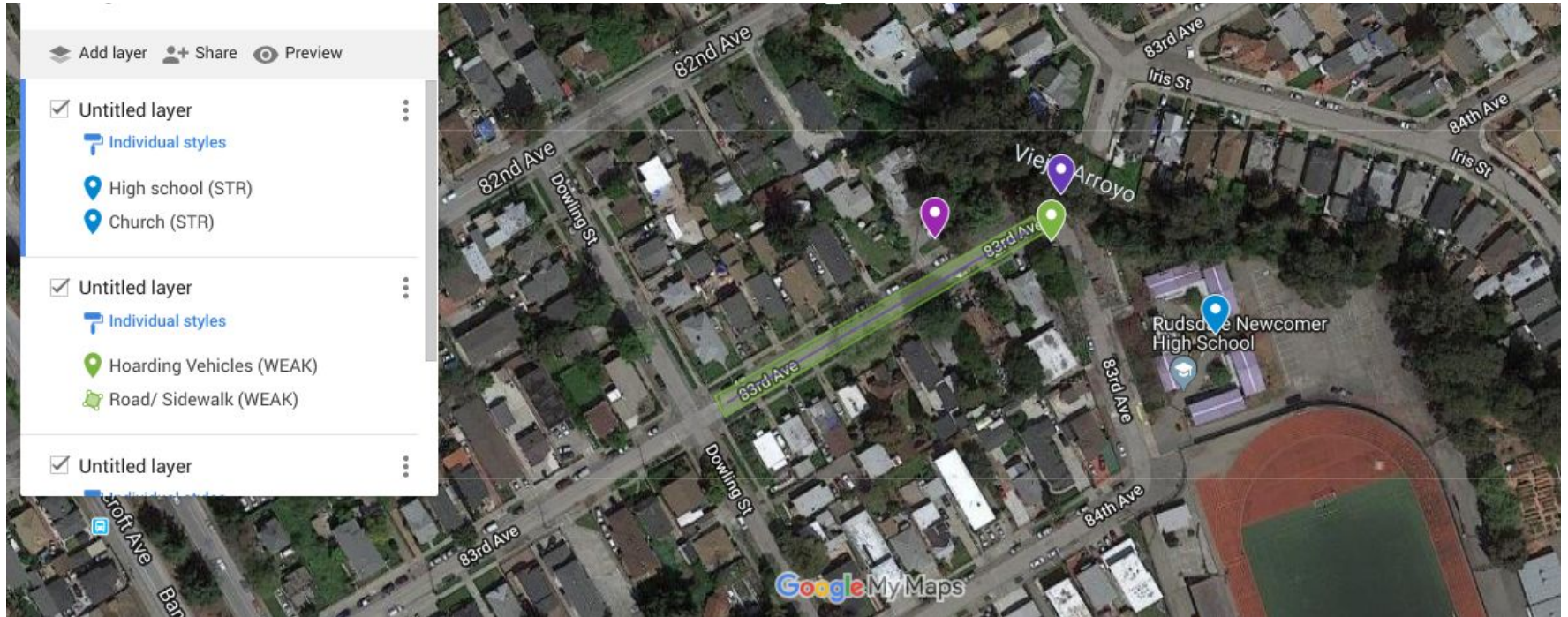
*Ideate: We brainstormed of ideas and made bubble diagrams.*

*Prototype: We sketched up a remodel of the house with our ideas.*

# Community Engagement

- A key point was that Ms. Barbara wanted the fence for safety and contentment
- When we heard Ms.Barbara wanted a fence we knew that this was a keypoint for her safety and privacy. We'd make sure we had to add this on our site design because it will make all residents feel comfortable.
- “People come by and steal our mail and our trash cans.”-Ms.Barbara

# Existing Conditions Maps



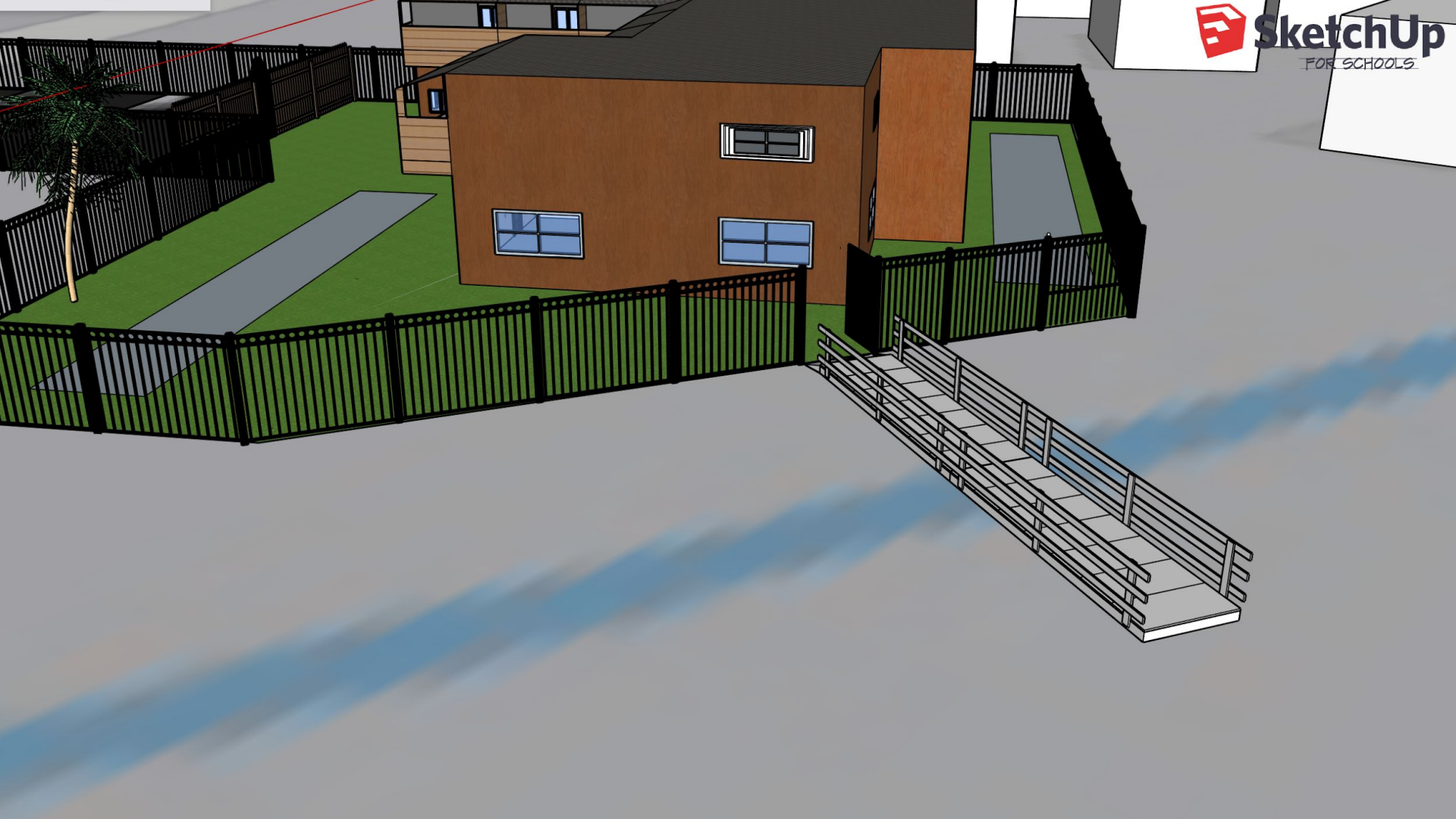
- It's not a link

# Site Design

- The house has a U shape and it's setback toward the back of the site.
- It's approximately 2400 sq ft per floor.







# Seating/Recreation Area

- We have 5 benches around the perimeter
- We choose 5 benches so more people can sit outside and enjoy the nature around their area.





# Building Siding Material

- A material we used was dark wood.
- Ms.Barbara commented that she wanted the original color back which was dark wood.



# Paving Material

- For the driveway we will use asphalt.
- For other areas we are going to use concrete.
- We choose asphalt because it's inexpensive and we chose concrete because it's easier to maintain.



# Landscaping

- For landscaping we would put palm trees, drought tolerant plants.
- We chose this landscaping because palm trees grab people's attention. And drought tolerant plants do not need a lot of water.



# Streetscape

- Streetscape improvements we added were benches
- We chose this improvement so people could sit down and enjoy the environment.
- We also want to add more trees to the environment.



# Creek Connection/Improvements

- We are going to add the bridge back on the apartment building across the creek and add solar lights.
- It will help Ms.Barbara for easier transportation needs.



# Community Sustainability

- It will make it more better and sustainable for residents because of the comfort and safety provided.
- A clean street and benches make the neighborhood more sustainable. Because people are going to want to go outside more.
- If we put the bridge back to the creek it will help residents to walk more.

# Reflection

- We learned that the sustainability of Oakland is fragile.
- Creating the building on my sketchup was the hardest part of the project.
- The easiest part of the design process was Defining.
- What we should've done differently was building the sketchup earlier because it takes up alot of time.